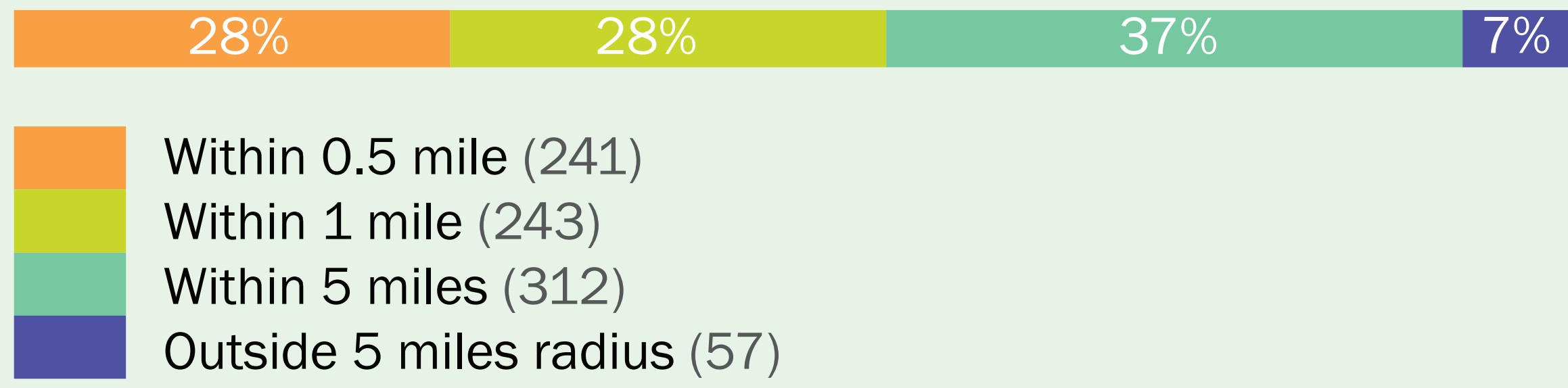
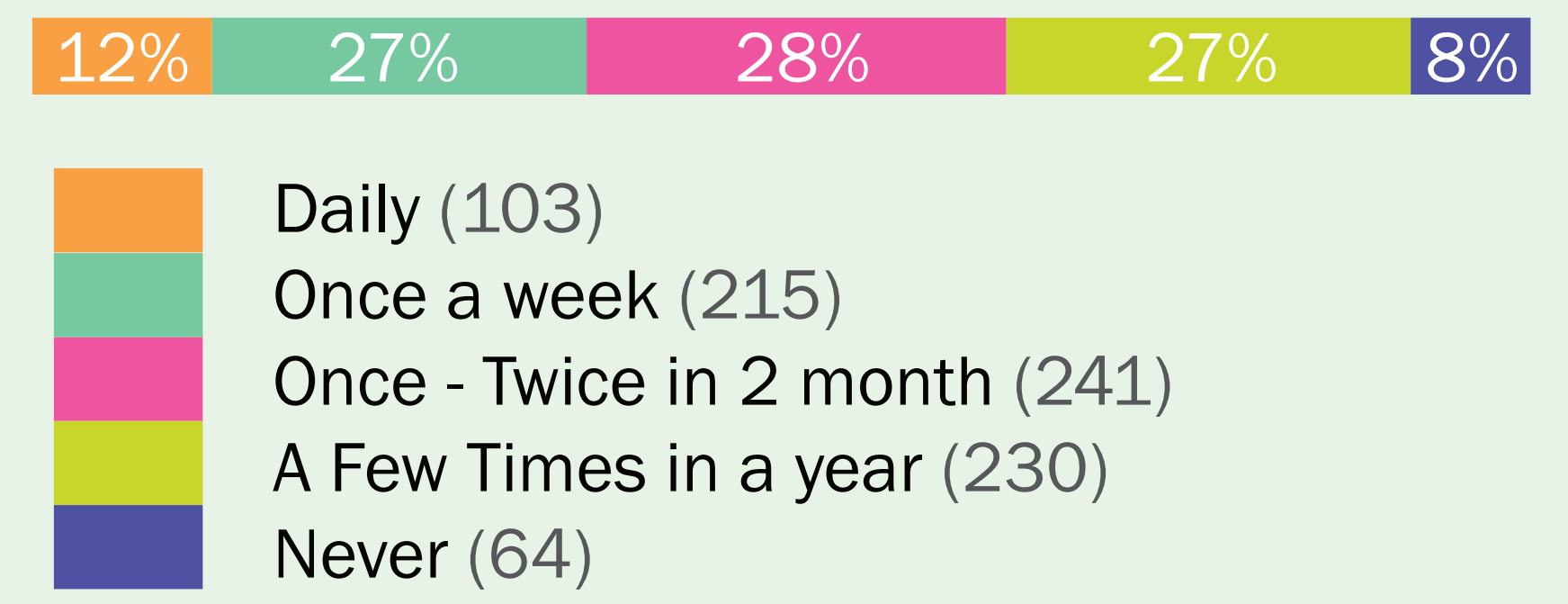


Survey Summary

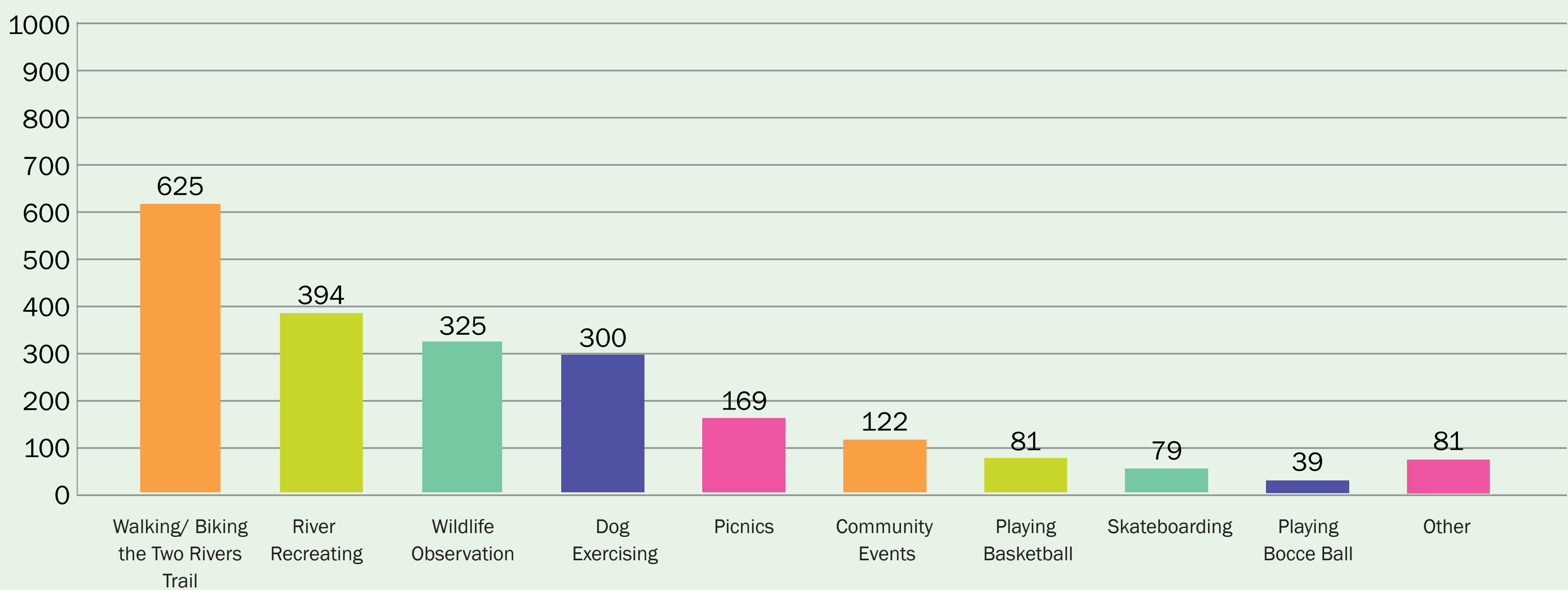
Q1: How far from the park do you live?



Q2: How often do you visit the park?



Q3&4: What activities do you participate in at the park?



Top Responses:



Q5: Are there any Improvements you would like to see at existing activities listed below? *

River

- 27% Cleanness/Maintenance
- 26% Access (Park, Trail, And River)
- 7% Unhoused Population
- 7% Preservation/Restoration

Basketball

- 36% Shade/Tree
- 16% Upgrade Court
- 7% Benches
- 4% More Courts

Dog Park

- 43% Shade/Tree
- 14% Grass & Planting
- 12% Maintenance
- 9% Seating

Bocce Ball

- 38% Shade/Tree
- 10% Maintenance
- 10% Remove/Relocate/Re-Purpose
- 5% Seating

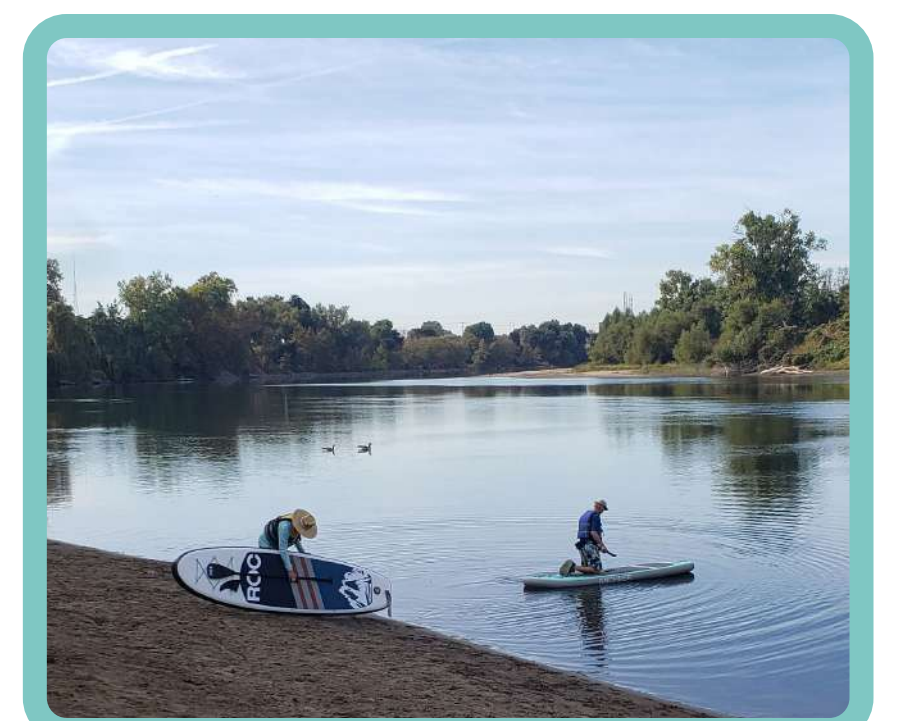
Skate Park

- 13% Hours
- 10% Improvements
- 7% Maintenance
- 5% Clean

Trail

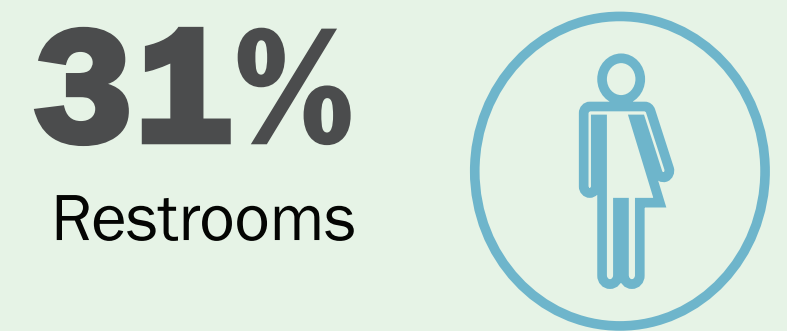
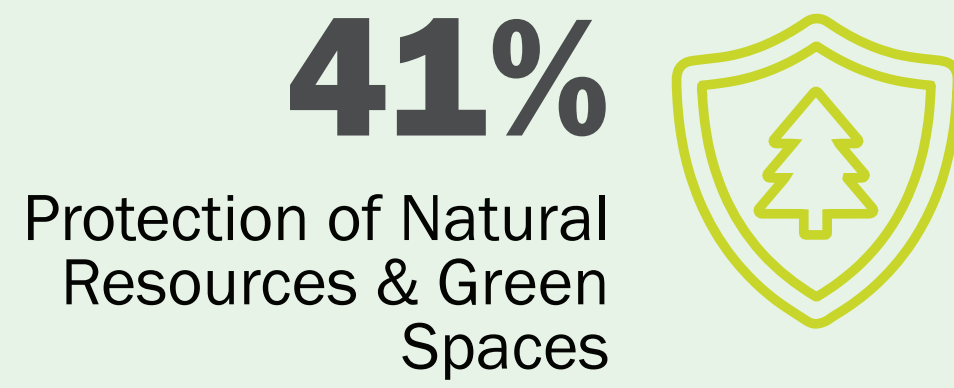
- 22% Trail Extend And Connection
- 14% Cleanness/Maintenance
- 10% Safety
- 8% Unhoused Population

Q6: Would you pay for parking if the funds helped to pay for additional amenities and/or improved maintenance at the park?

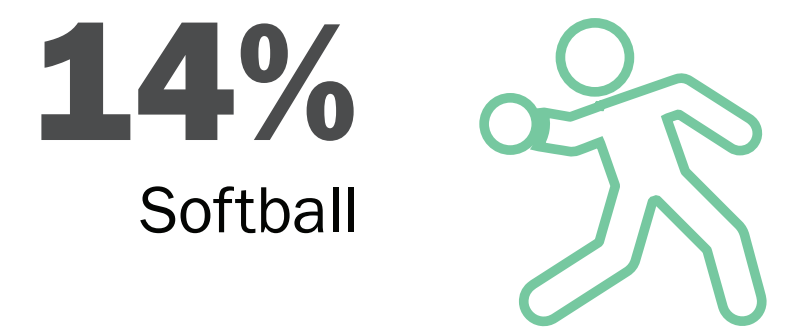
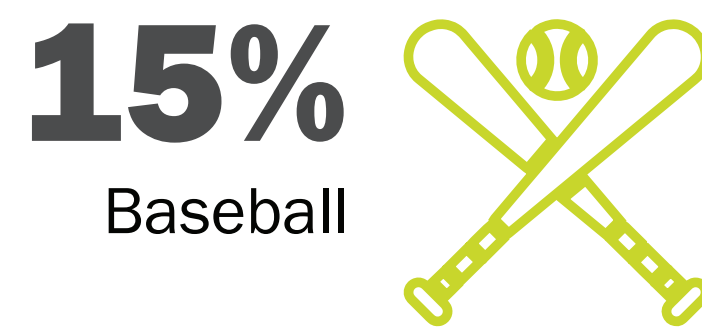
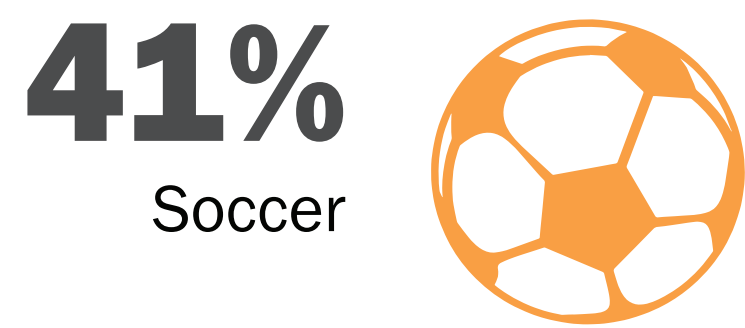


Survey Summary

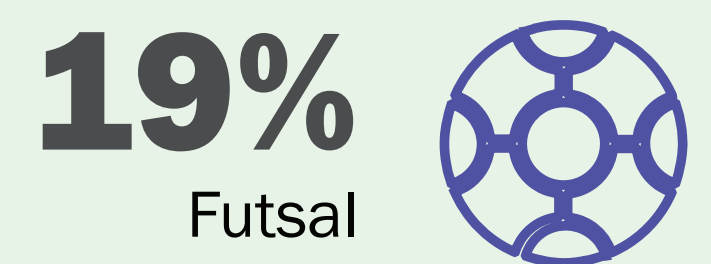
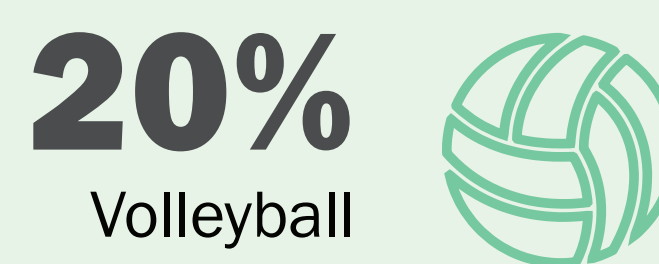
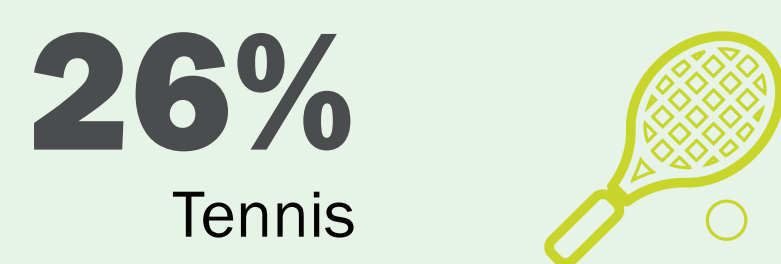
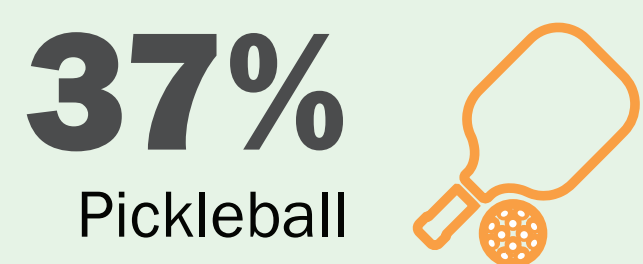
Q7: How Important are these factors in choosing to visit this park? *



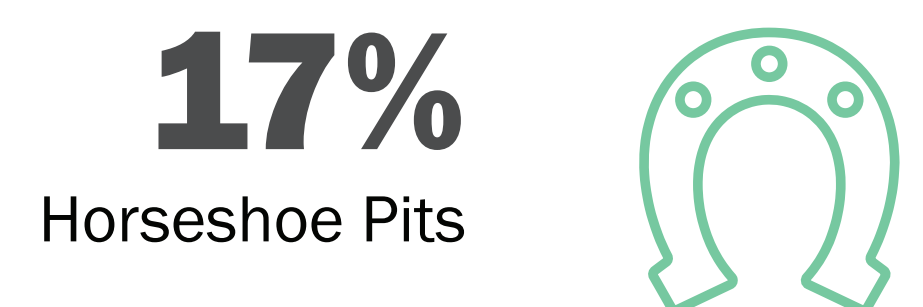
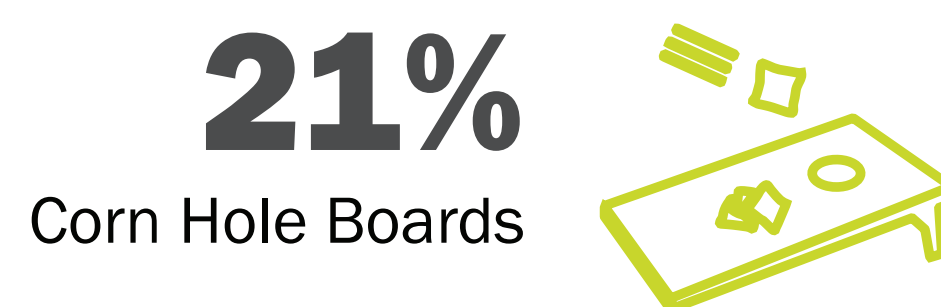
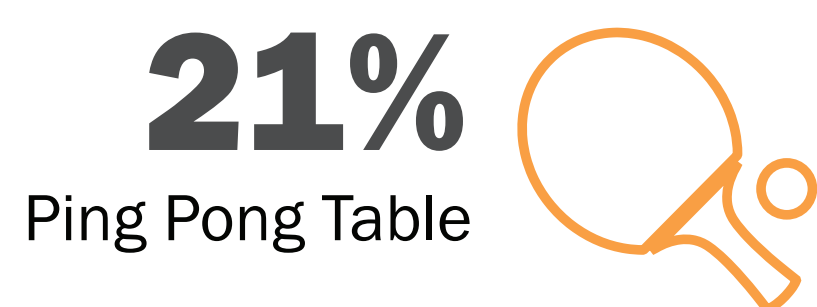
Q8: In the long term, sports fields may be feasible, if so, which of these sports fields are you interested in? *



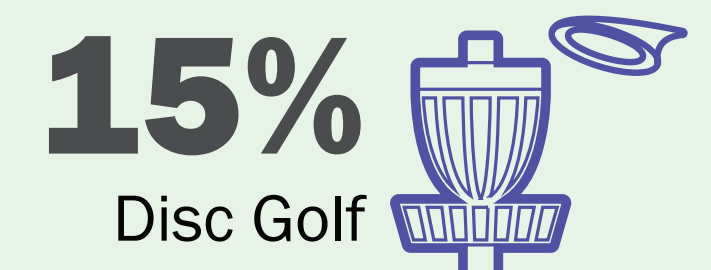
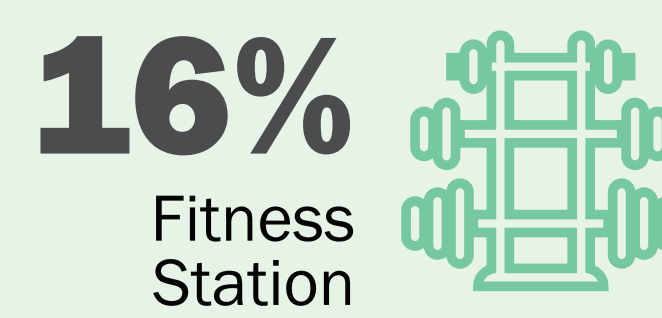
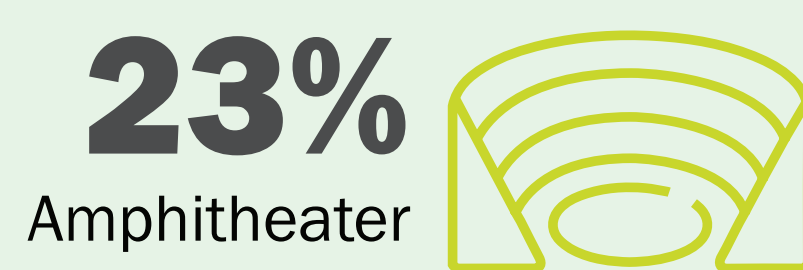
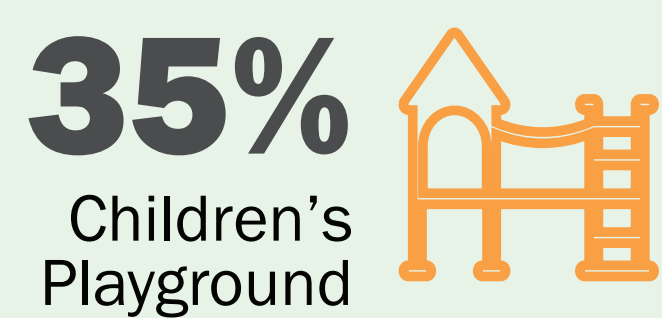
Q9: In addition to existing sports courts, which of these sports courts would you be interested in? *



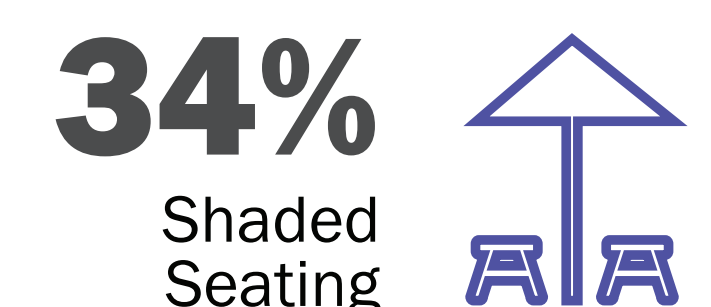
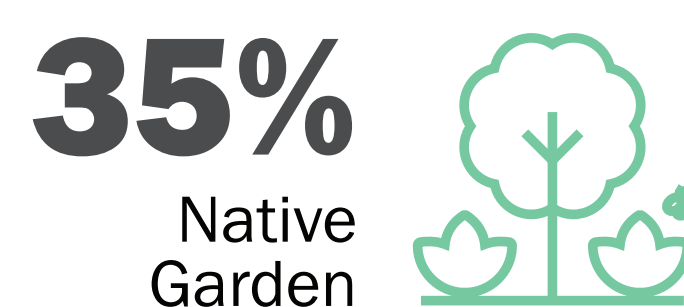
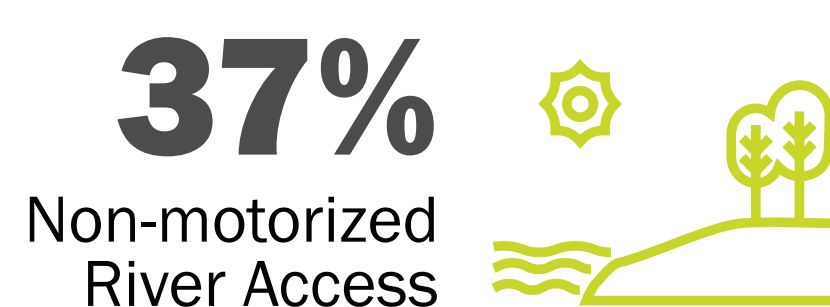
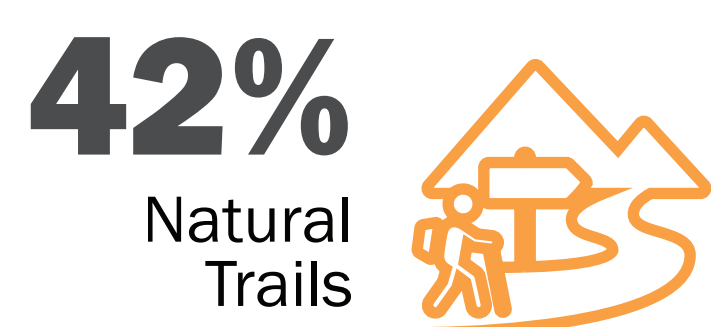
Q10: Are you interested in seeing the following social activities on this site? *



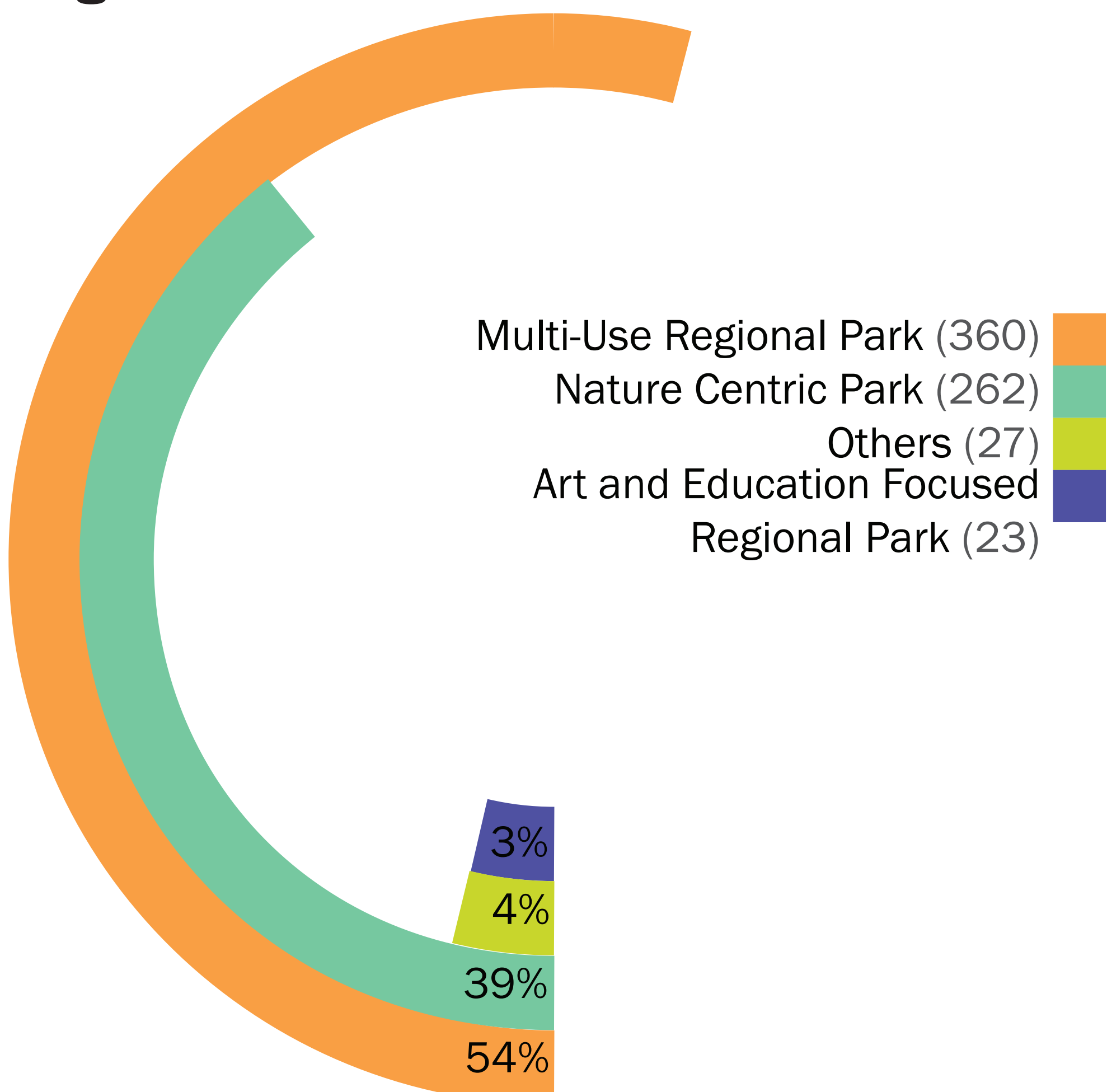
Q11: Are you interested in seeing the following active amenities on the site? *



Q12: Are you interested in seeing the following passive recreation amenities on the site? *



Q13: What is your vision of Sutter's Landing Regional Park?



Q15: Do you have any comments, questions, or concerns regarding this project? **

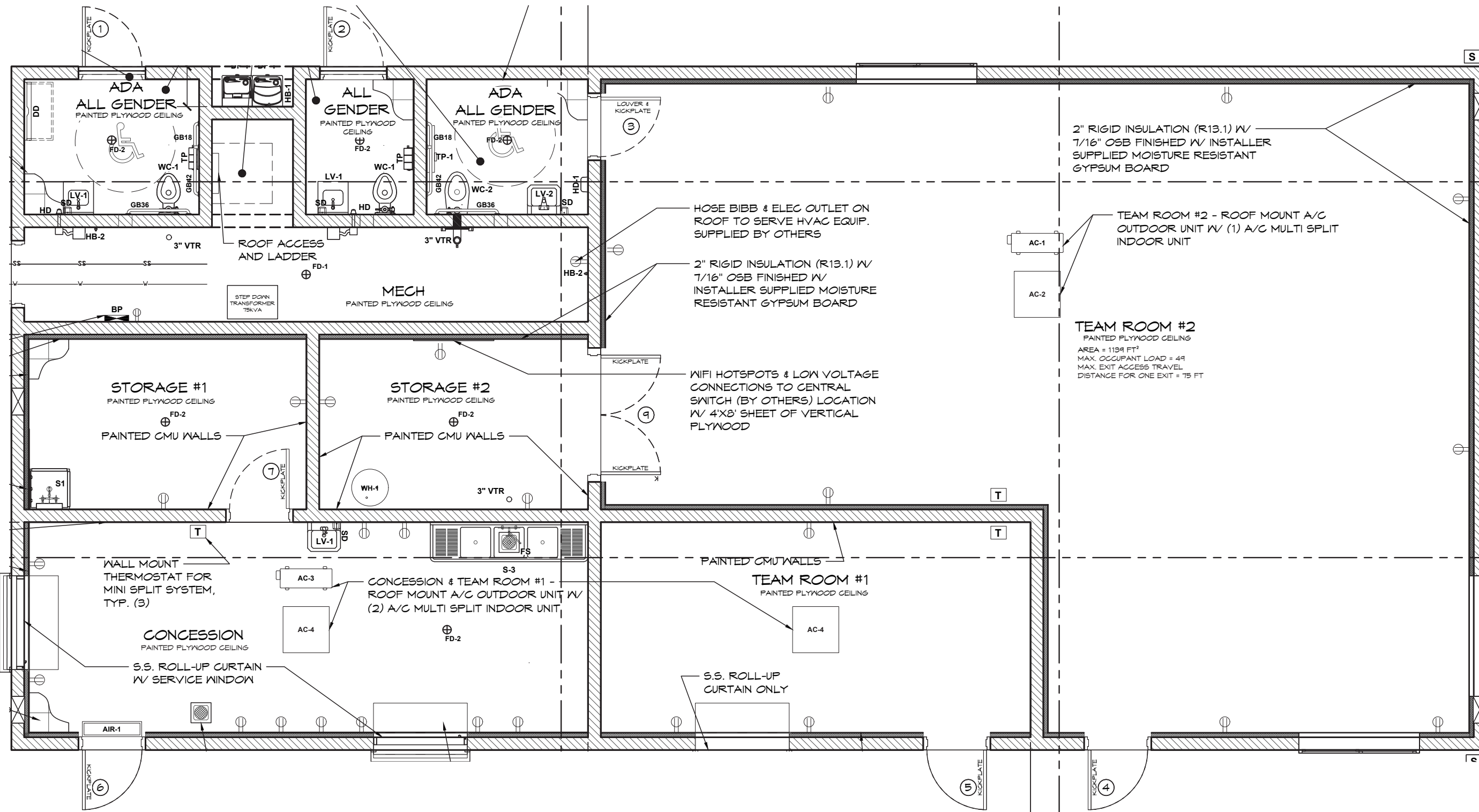
- 53 Comments about nature focused, preservation, native plants
- 17 Comments about dog park maintenance
- 15 Comments about shade
- 14 Comments about trail(natural, informal, paved, connection, widening)
- 13 Comments about pickle ball and tennis court
- 13 Comments about homeless
- 12 Comments about safety
- 12 Comments about maintenance
- 12 Comments about multi-use
- 9 Comments about art & education

** group by most mentioned from over 190 comments

* Summary shows top ranked responses of each sub-question and not overall percentage.

Sutter's Landing Park Building

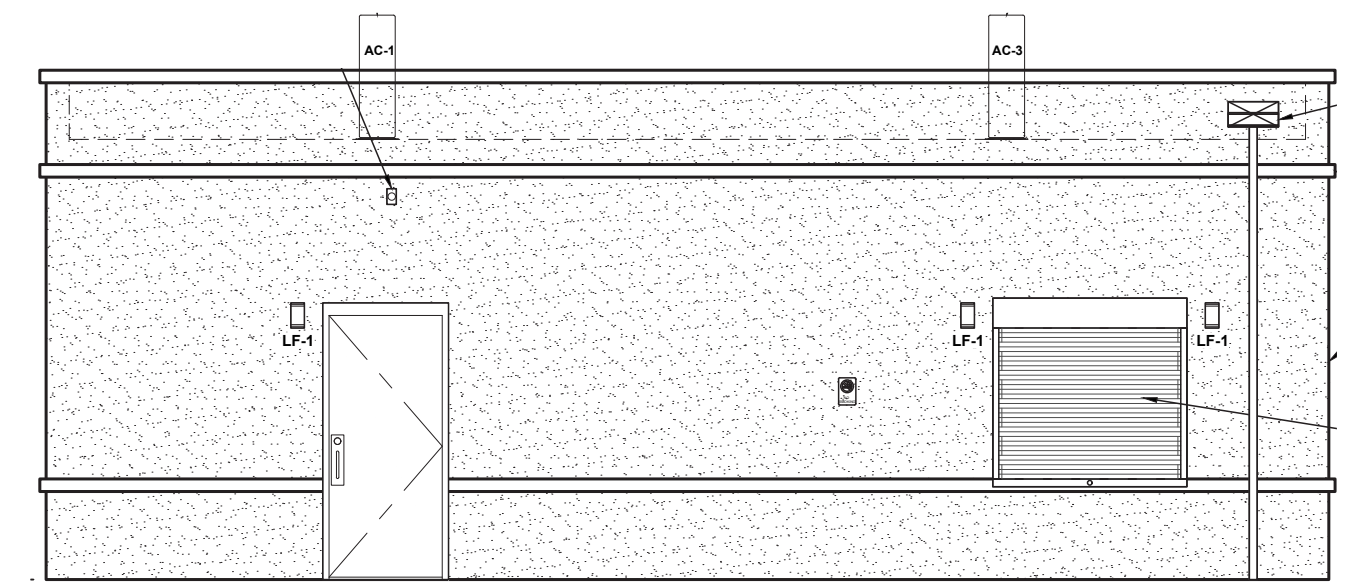
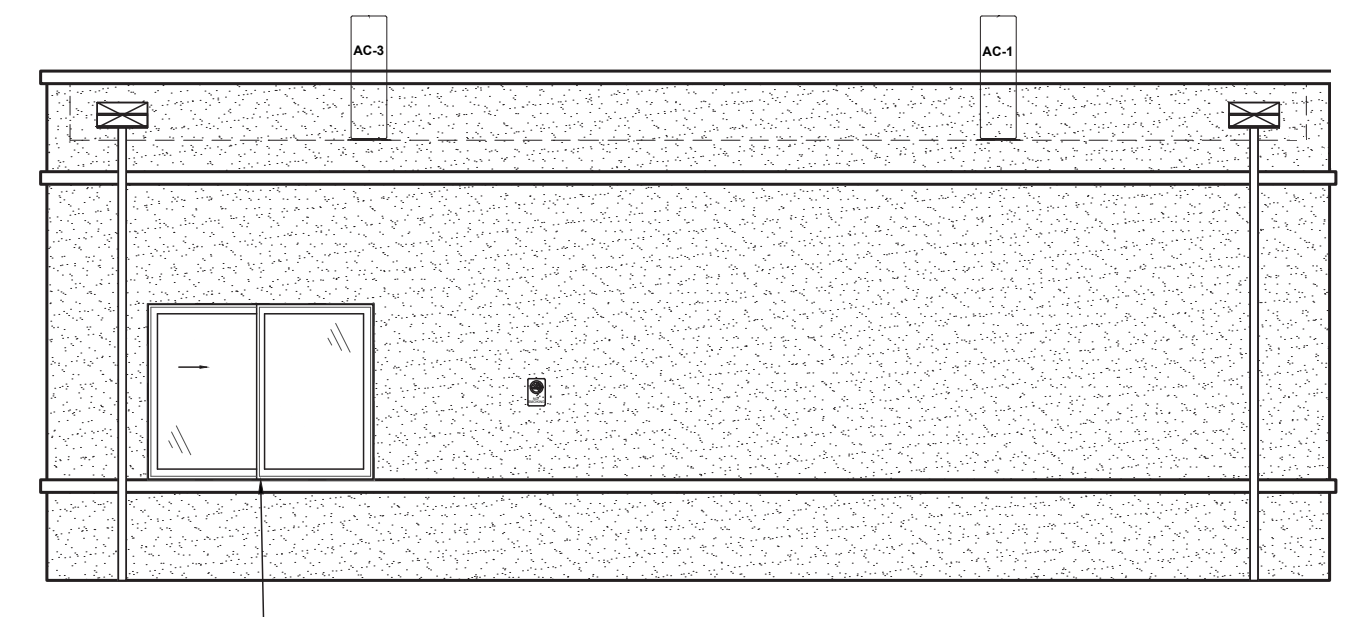
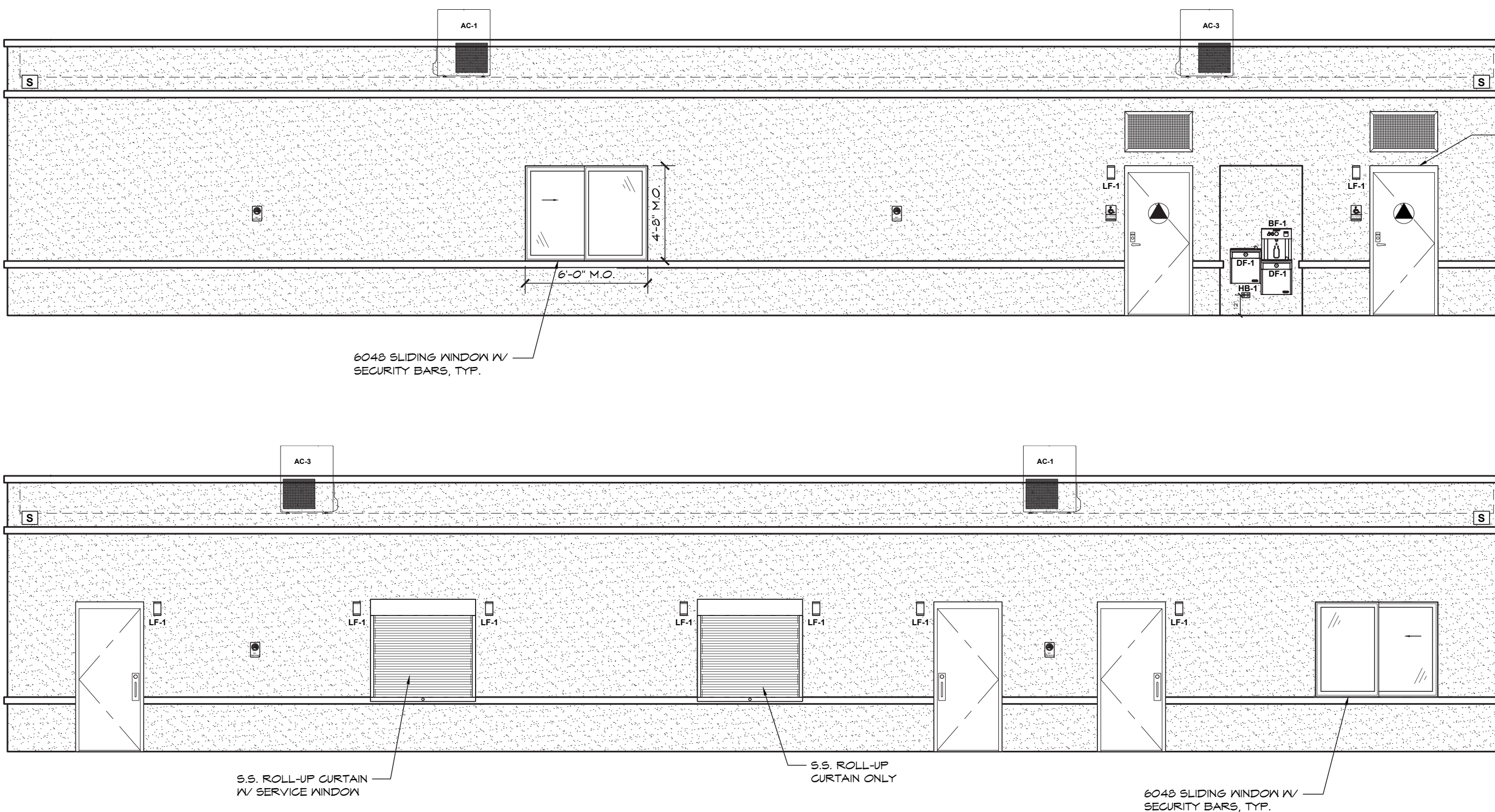
Building Plan View



Building Includes:

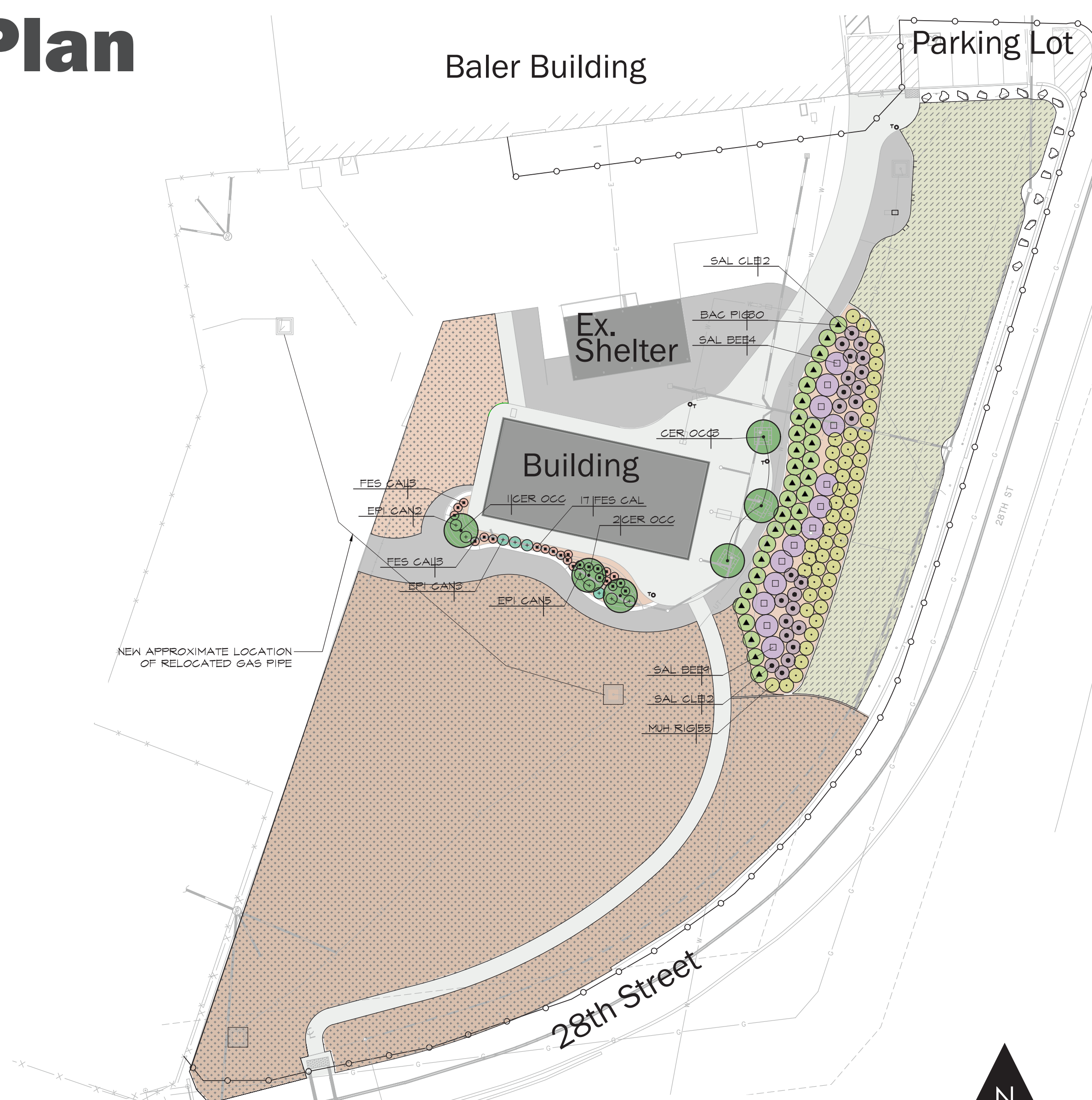
- Public Restrooms (2)
- Park Ranger Offices
- Concessions
- Drinking Fountains

Building Elevation



N.T.S

Site Plan



Site Improvements Include:

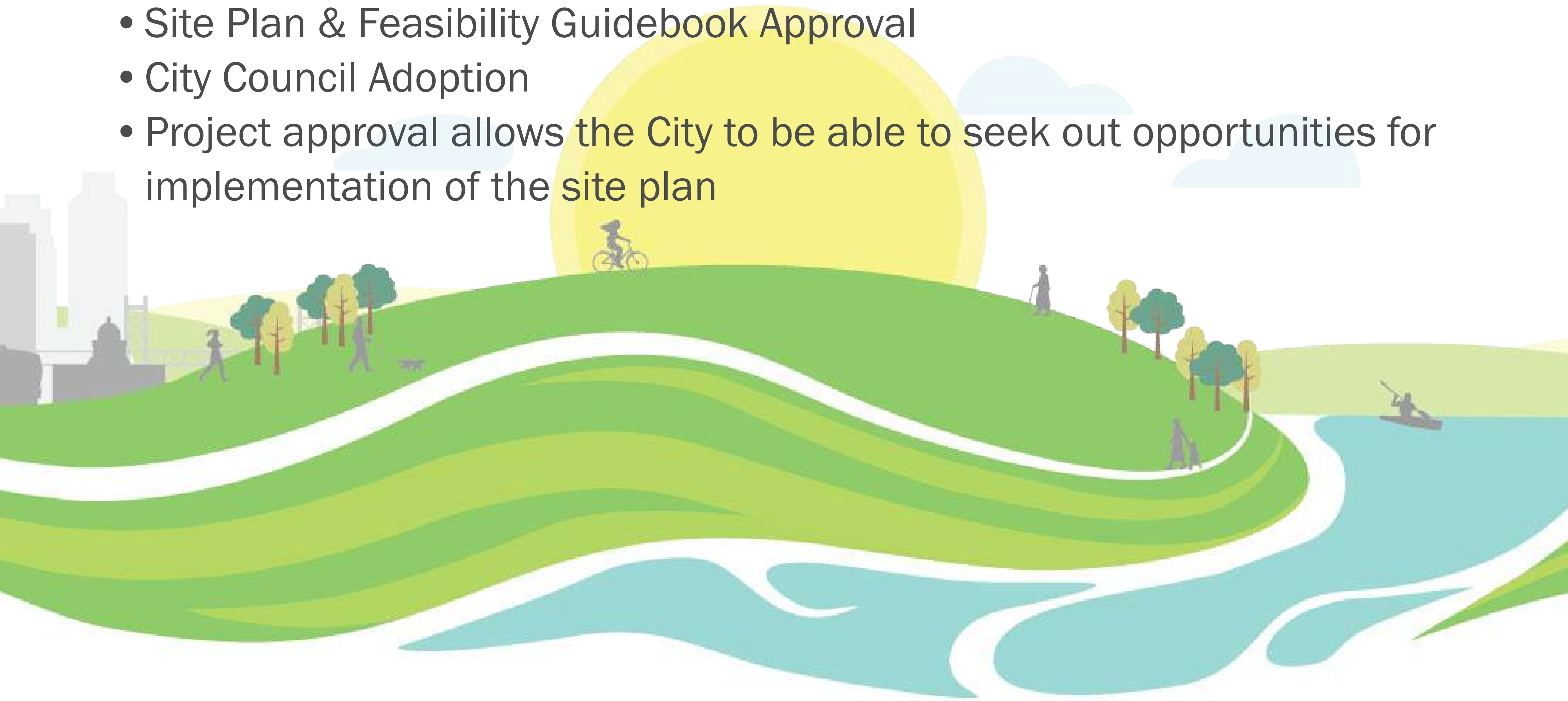
- Accessible Parking
- Accessible Paths
- Plaza Space and Seating
- Native Plantings
- Irrigation System
- Landfill Cap



Why Your Are Here

What Happens Next:

- Site Plan & Feasibility Guidebook Approval
- City Council Adoption
- Project approval allows the City to be able to seek out opportunities for implementation of the site plan



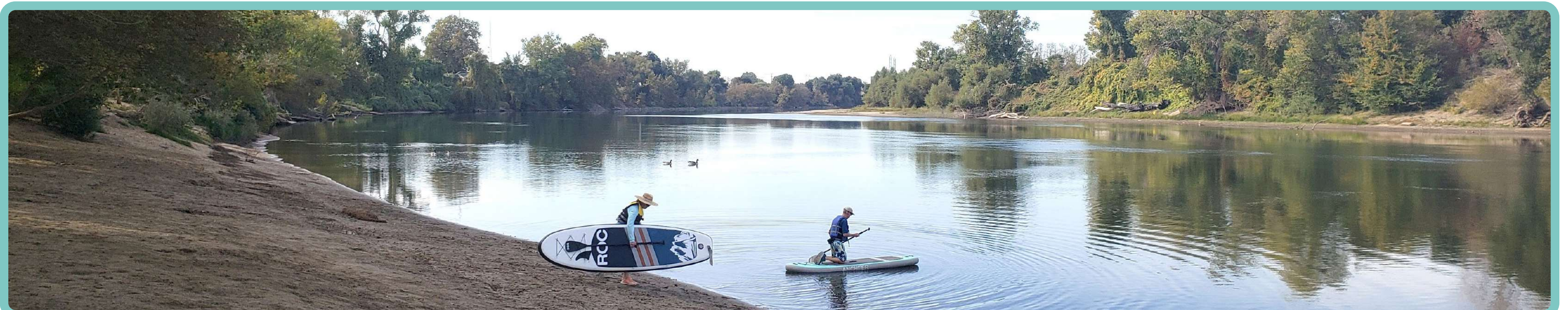
What Is Also Happening at Sutter's Landing:

- Consolidated Closure Plan
- Environmental Document
- Two Rivers Trail Phase III
- ADA River Access Trail
- Mural Project
- New Park Building



Why Your Input Matters:

- Previous plans did not include newly acquired parcels
- Comprehensive planning of other projects at the site
- Illustrates needs to expand park's footprint to support user needs
- Funding Opportunities
 - Grants
 - Investors
 - Partnerships



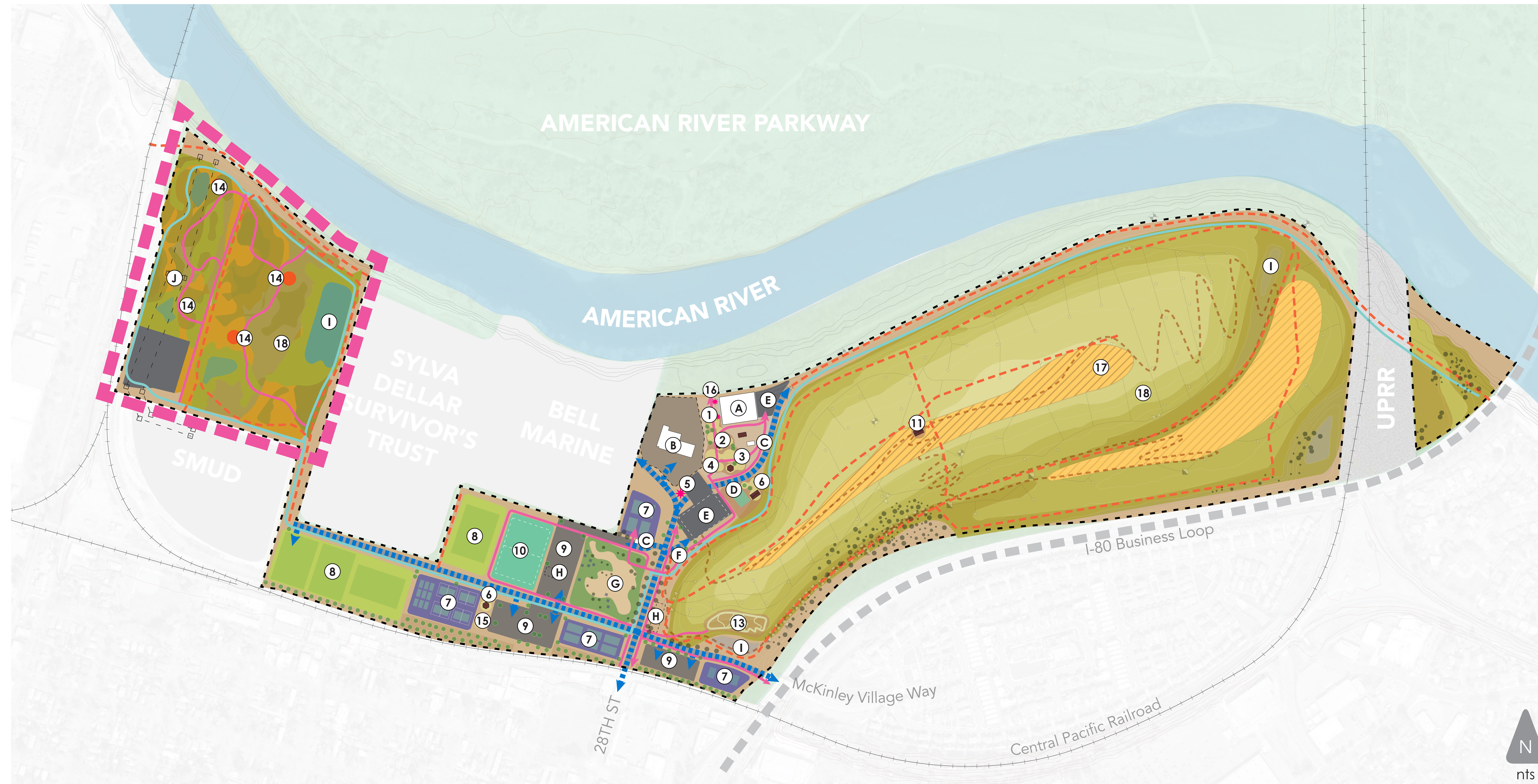
THE PRESERVE: NATURE EDUCATION AND PASSIVE ACTIVITIES

Q. WHAT KIND OF PASSIVE ACTIVITIES WOULD YOU LIKE TO PARTICIPATE IN THIS AREA?

Blank area for user input.

Q. WHAT KIND OF AMENITY IS NEEDED FOR WILDLIFE OBSERVATION IN THIS AREA?

Blank area for user input.



Existing Conditions

- A 28th & B St. Skate Park
- B Corporation Yard
- C Concessions/Restroom/Ranger Station
- D Bocce Ball Courts
- E Parking Lot
- F Shade Shelter
- G Dog Park
- H Flare Station
- I Detention Basin
- J Transmission Towers
- K American River Parkway Access Point

Proposed Amenities

- 1 Garden/ Art Walk
- 2 Nature Play Zone
- 3 Outdoor Fitness Zone
- 4 Community Plaza with Gathering Space
- 5 Art/ Signage
- 6 Covered Picnic Area
- 7 Multi-Use Courts
- 8 Multi-Use Fields
- 9 Parking
- 10 Flexible Community Space
- 11 Vista Point With Group Viewing And Seating Area
- 12 Disc Golf Area
- 13 Bike Track
- 14 Resting Point
- 15 Play Area
- 16 River Outlook
- 17 Native Grassland Nature Open Space

Circulation

- Pedestrian - Paved
- - - Pedestrian - Unpaved
- Vehicular
- Two Rivers Bike Trail
- - - Maintenance Road/ Access

Symbols

- Tree - Proposed
- Tree - Existing
- * Art Installation

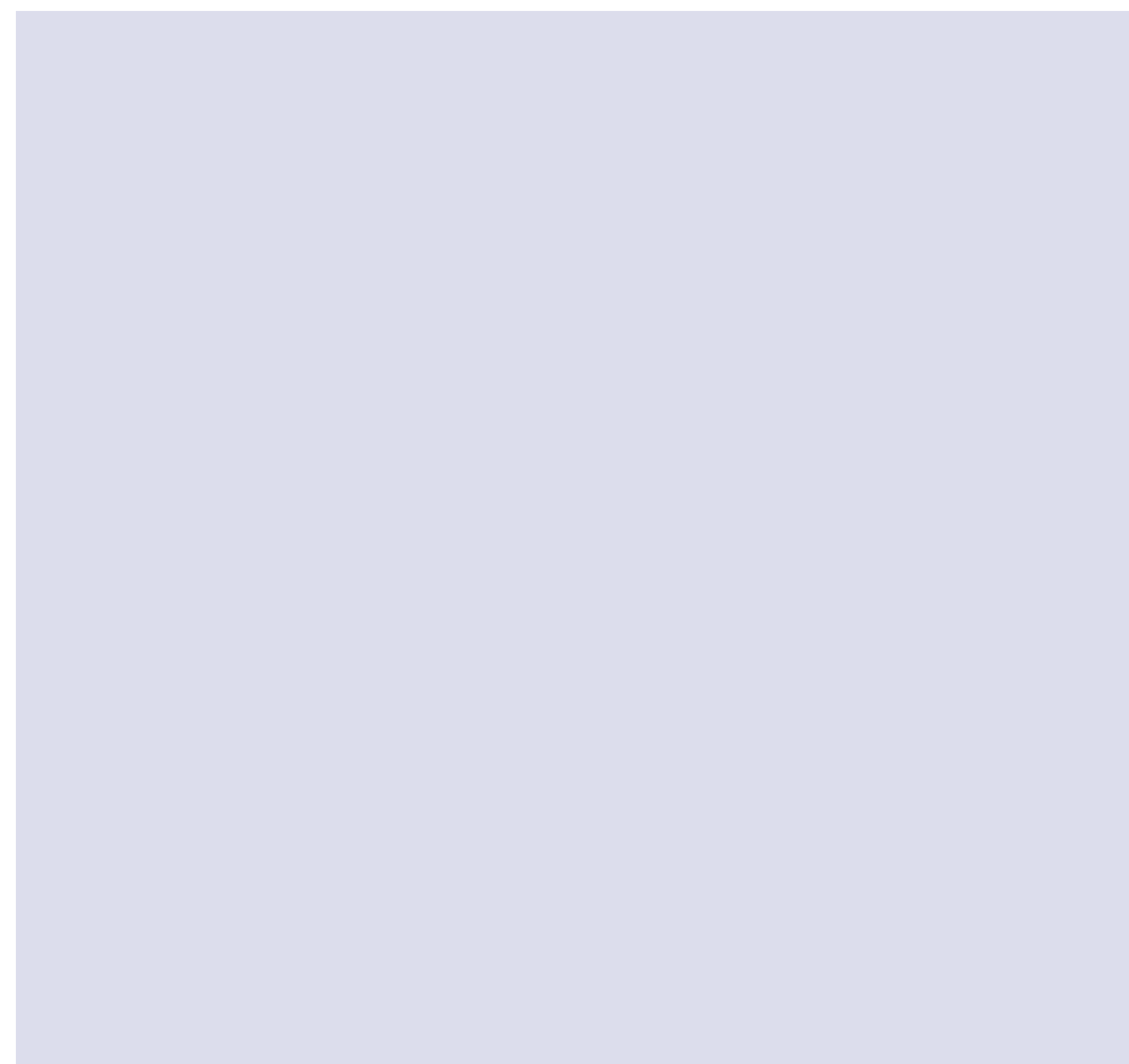


ADDITIONAL COMMENTS

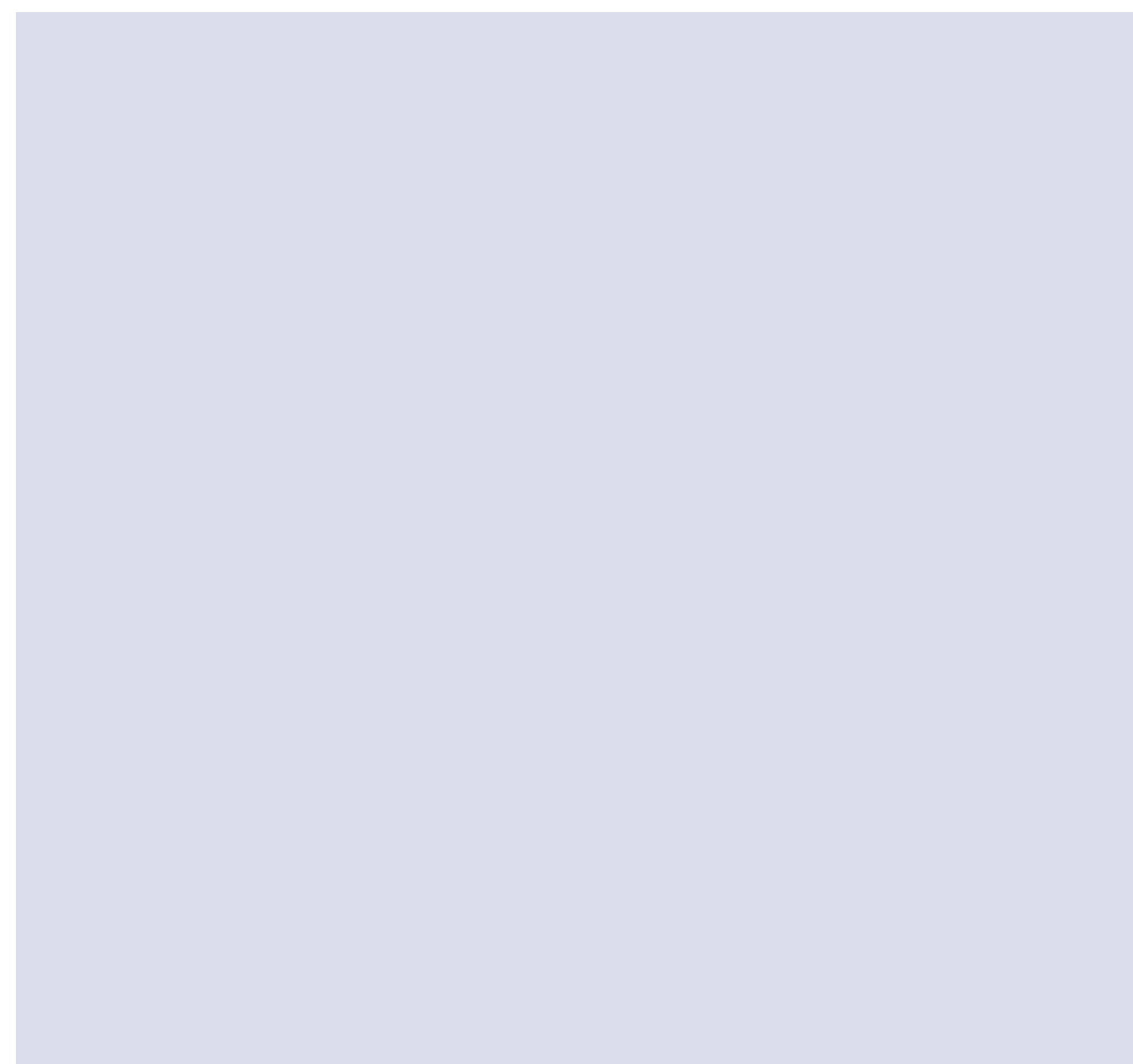
Large blank area for additional comments.

THE LANDFILL: REUSE EDUCATION AND ACTIVITIES AREA

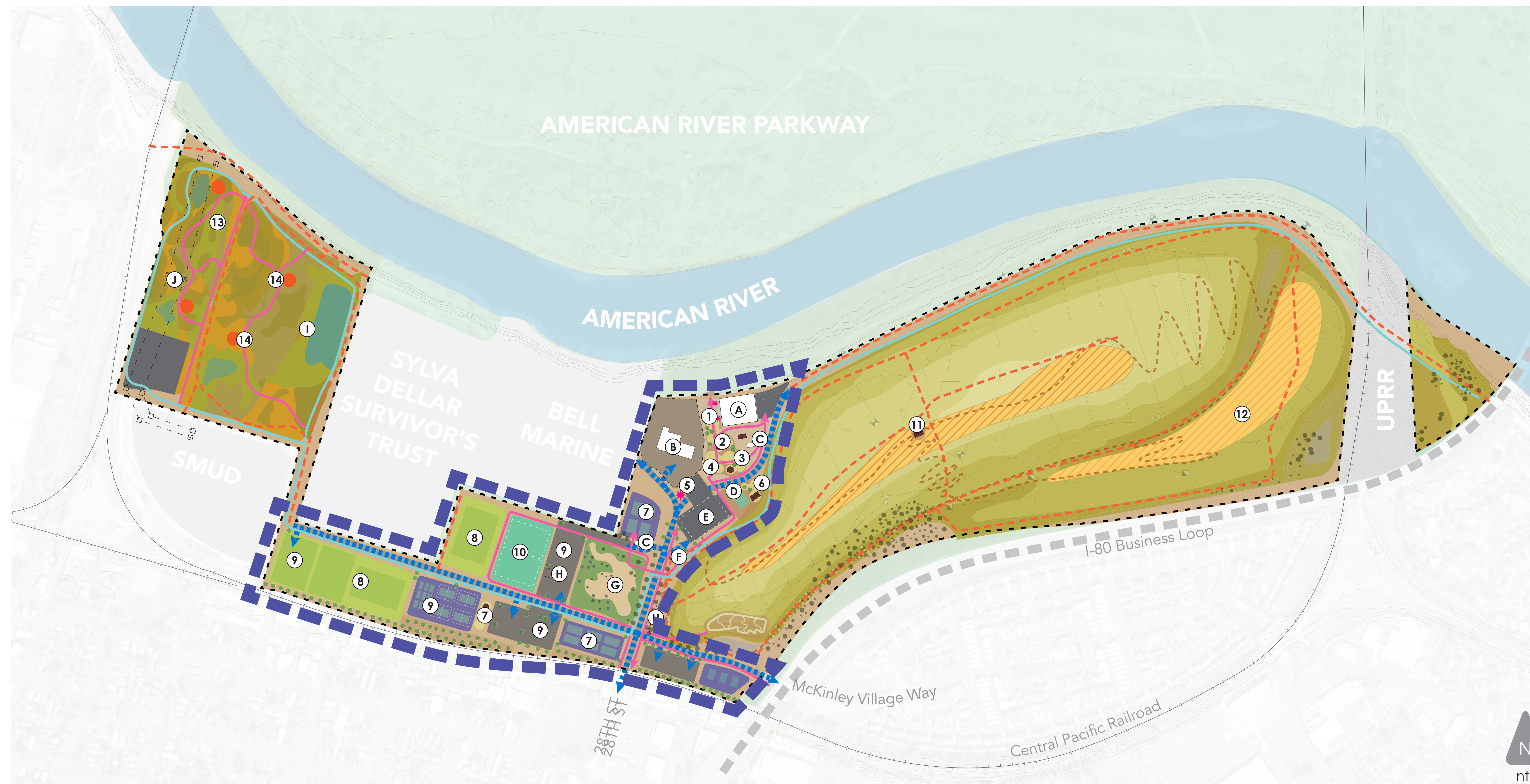
Q. WHAT KIND OF ACTIVITIES WOULD YOU LIKE TO PARTICIPATE IN THIS AREA?



Q. What is your priority, what would you want built first?



ADDITIONAL COMMENTS



Existing Conditions

- A 28th & B St. Skate Park
- B Corporation Yard
- C Concessions/Restroom/Ranger Station
- D Bocce Ball Courts
- E Parking Lot
- F Shade Shelter
- G Dog Park
- H Flare Station
- I Detention Basin
- J Transmission Towers
- K American River Parkway Access Point

Proposed Amenities

- 1 Garden/ Art Walk
- 2 Nature Play Zone
- 3 Outdoor Fitness Zone
- 4 Community Plaza with Gathering Space
- 5 Art/ Signage
- 6 Covered Picnic Area
- 7 Multi-Use Courts
- 8 Multi-Use Fields
- 9 Parking
- 10 Flexible Community Space
- 11 Vista Point With Group Viewing And Seating Area
- 12 Disc Golf Area
- 13 Bike Track
- 14 Resting Point
- 15 Play Area
- 16 River Outlook
- 17 Native Grassland Nature Open Space

Circulation

- Pedestrian - Paved
- Pedestrian - Unpaved
- Vehicular
- Two Rivers Bike Trail
- Maintenance Road/ Access

Symbols

- Tree - Proposed
- Tree - Existing
- Art Installation

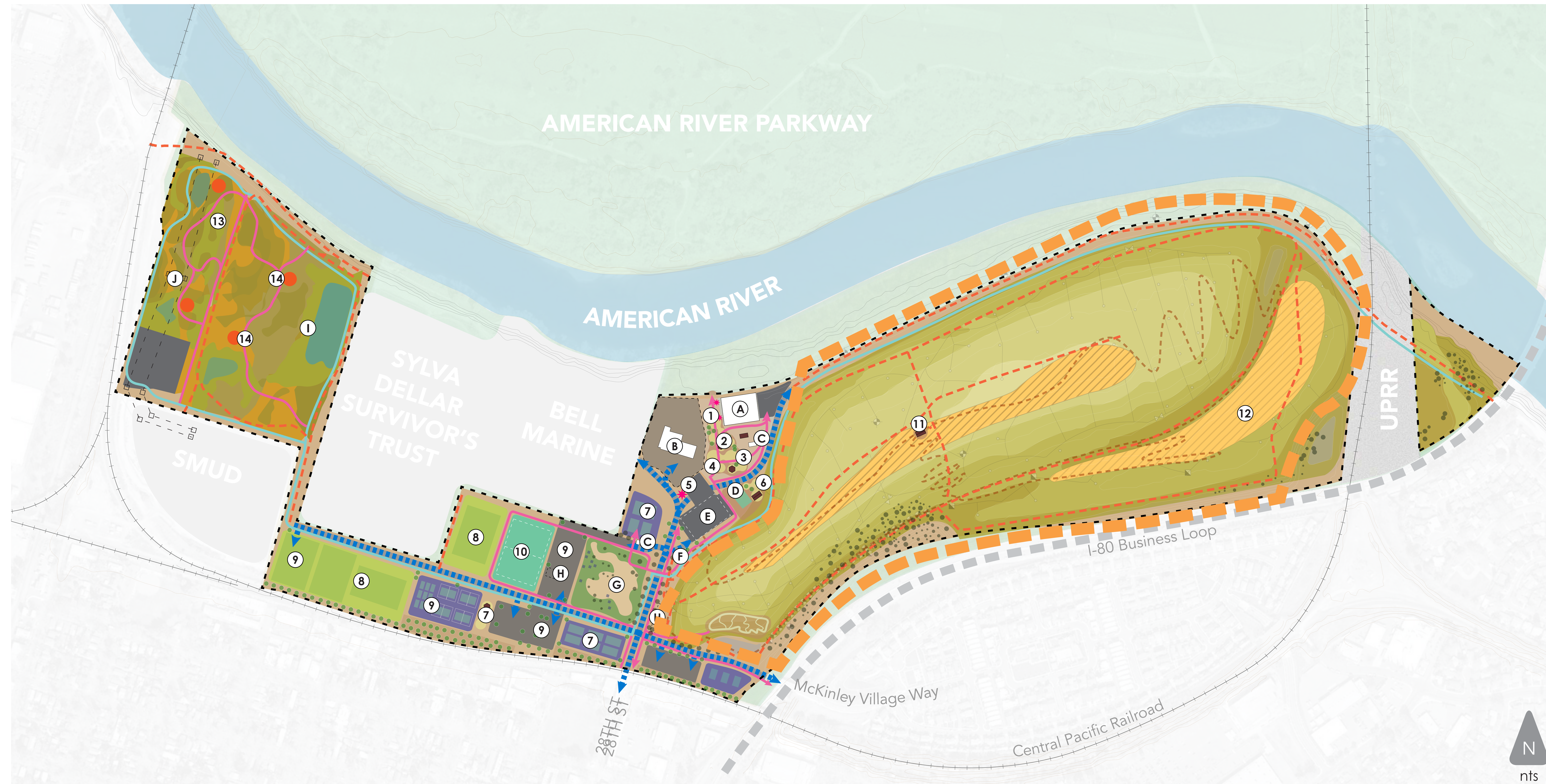


THE MOUND: OBSERVE AND EXPERIENCE AREA

Q. WHAT KIND OF EDUCATIONAL PROGRAM WOULD YOU LIKE TO SEE IN THIS AREA?

Q. WHAT KIND OF AMENITY IS NEEDED FOR WILDLIFE OBSERVATION IN THIS AREA?

ADDITIONAL COMMENTS



Existing Conditions		Proposed Amenities			Circulation		Symbols		
A	28th & B St. Skate Park	1	Garden/ Art Walk	7	Multi-Use Courts	→	Pedestrian - Paved	●	Tree - Proposed
B	Corporation Yard	2	Nature Play Zone	8	Multi-Use Fields	- - -	Pedestrian - Unpaved	●	Tree - Existing
C	Concessions/Restroom/ Ranger Station	3	Outdoor Fitness Zone	9	Parking	→	Vehicular	*	Art Installation
D	Bocce Ball Courts	4	Community Plaza with Gathering Space	10	Flexible Community Space	→	Two Rivers Bike Trail		
E	Parking Lot	5	Art/ Signage	11	Vista Point With Group Viewing And Seating Area	- - -	Maintenance Road/ Access		
F	Shade Shelter	6	Covered Picnic Area	12	Disc Golf Area				
G	Dog Park			13	Bike Track				
H	Flare Station			14	Resting Point				
I	Detention Basin			15	Play Area				
J	Transmission Towers			16	River Outlook				
K	American River Parkway Access Point			17	Native Grassland				
				18	Nature Open Space				

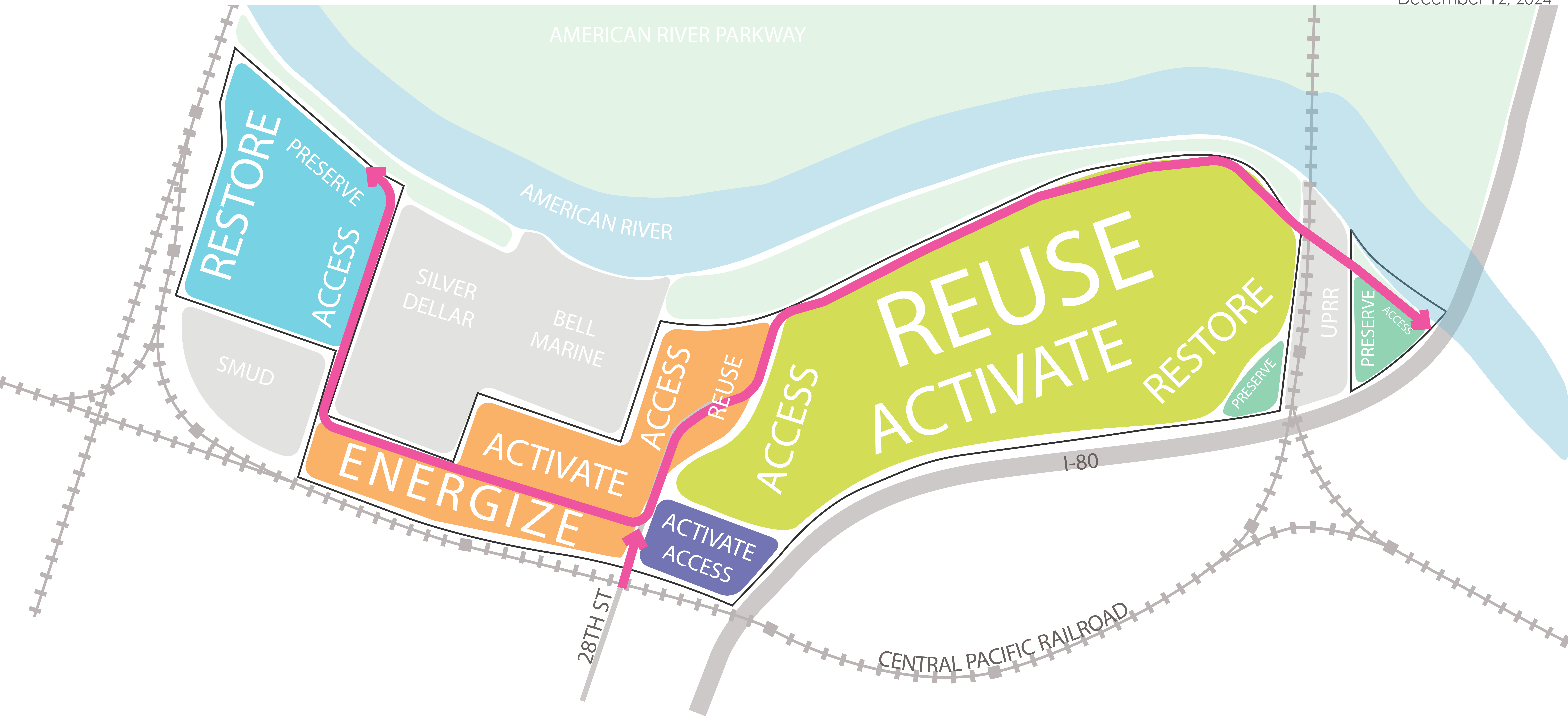


SUTTER'S LANDING PARK SITE PLAN: CURRENTLY DEVELOPABLE AREA

December 12, 2024



SUTTER'S LANDING PARK GOALS PLAN



ACCESS
CONNECTIONS THROUGHOUT THE PARK
ENSURE ALL MEMBERS OF THE COMMUNITY HAVE EQUITABLE ACCESS



ENERGIZE
INFUSE THE SPACE WITH LIFE AND ENERGY
RECREATIONAL SPACE FOR DIVERSE USERS



PRESERVE
CELEBRATE SIGNIFICANT HISTORIC AND NATURAL FEATURES
CREATE A MEMORABLE SPACE THAT LEAVES AN INDELIBLE MARK ON THE VISITOR



RESTORE
CREATION OF NATURAL HABITAT
BRING BACK NATURE



ACTIVATE
VIBRANT COMMUNITY HUB
COMMUNITY SIZED EVENTS AND ATTRACTIONS



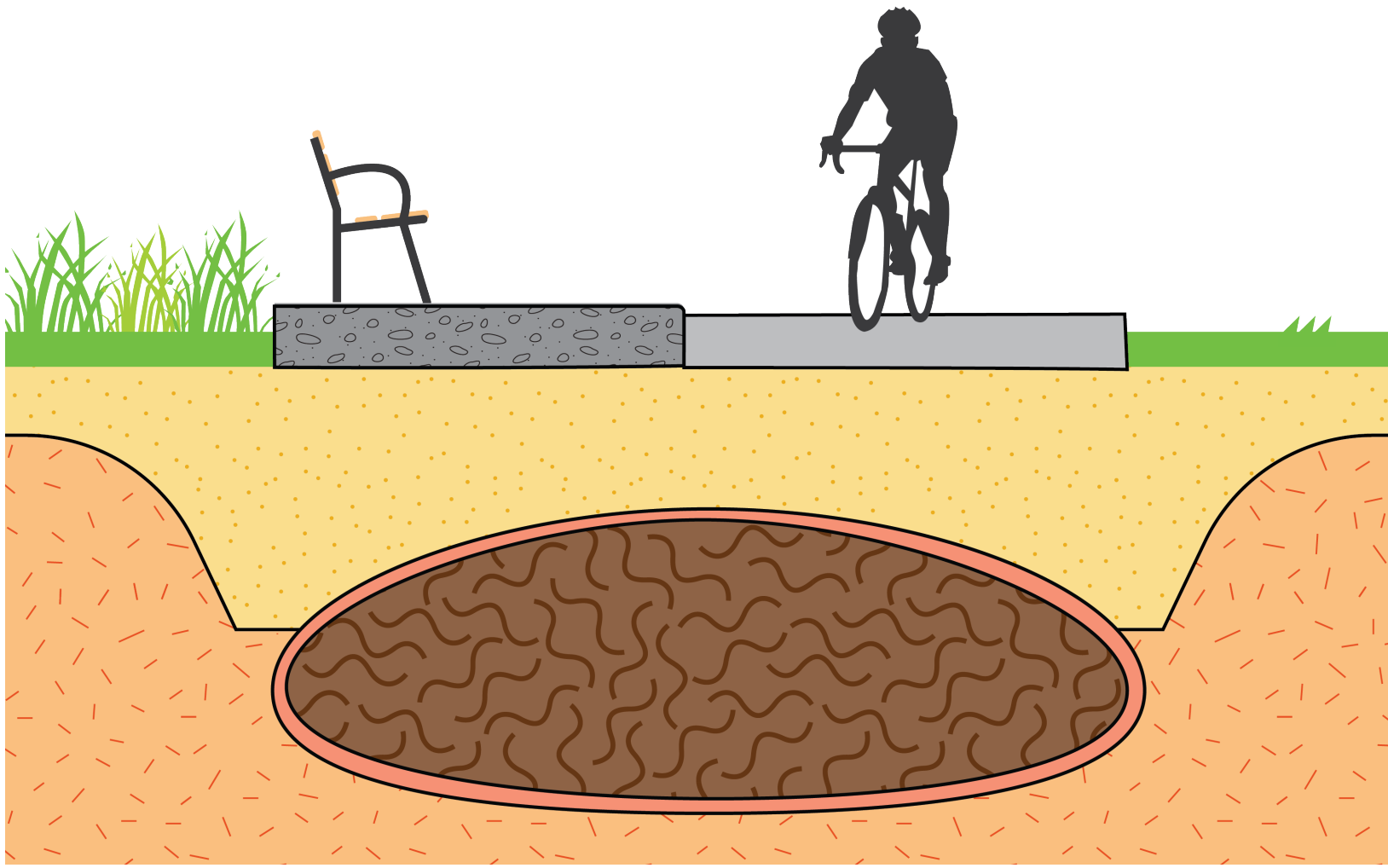
REUSE
EMBRACE THIS INDUSTRIAL HISTORY
REUSE STRUCTURES AND FEATURES



Development on Landfill

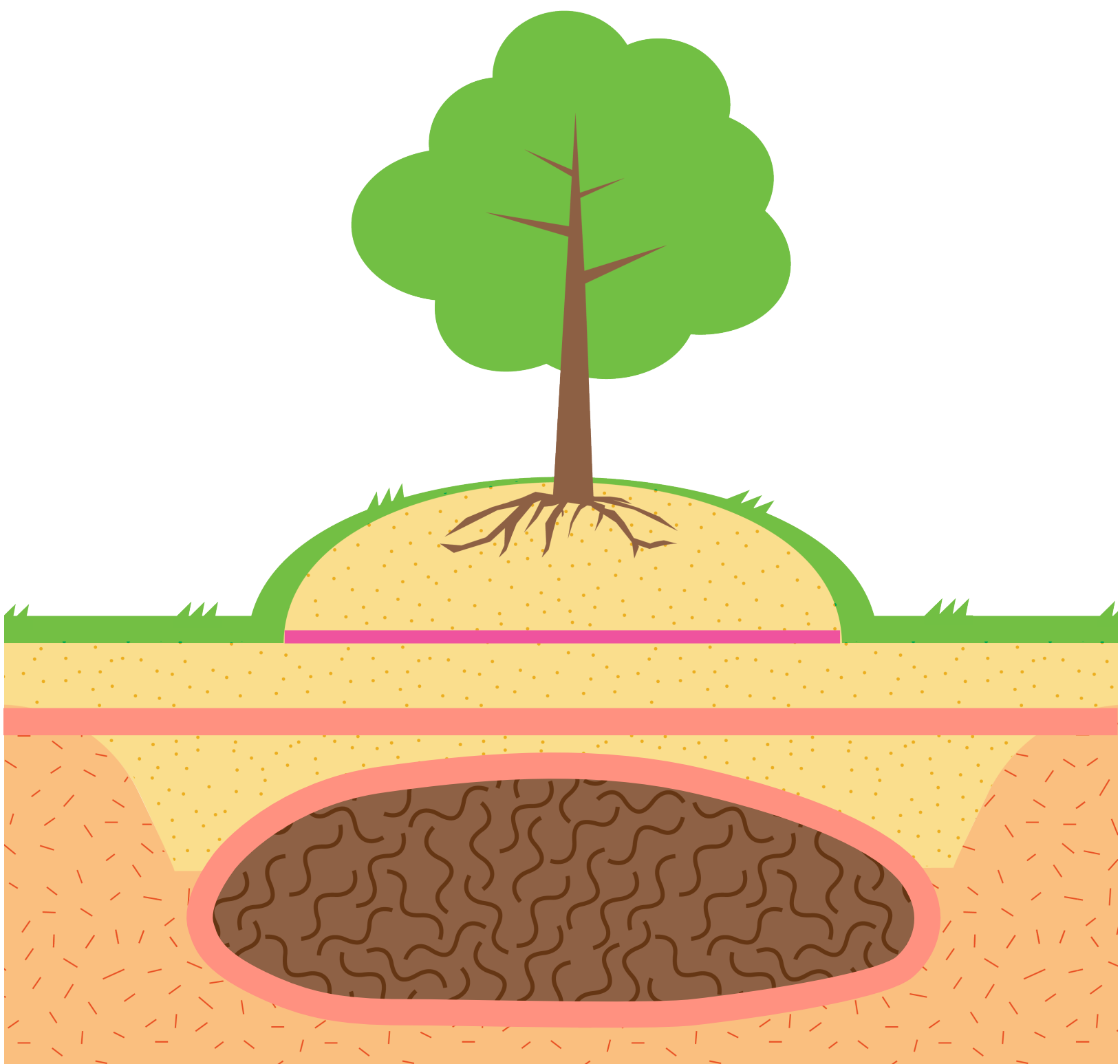
Installing park features on a closed landfill is feasible but has more factors to consider, including the ground settling at various rates in different areas. The State of California and the County of Sacramento also have various landfill regulatory requirements that must be addressed.

Low Impact Improvements



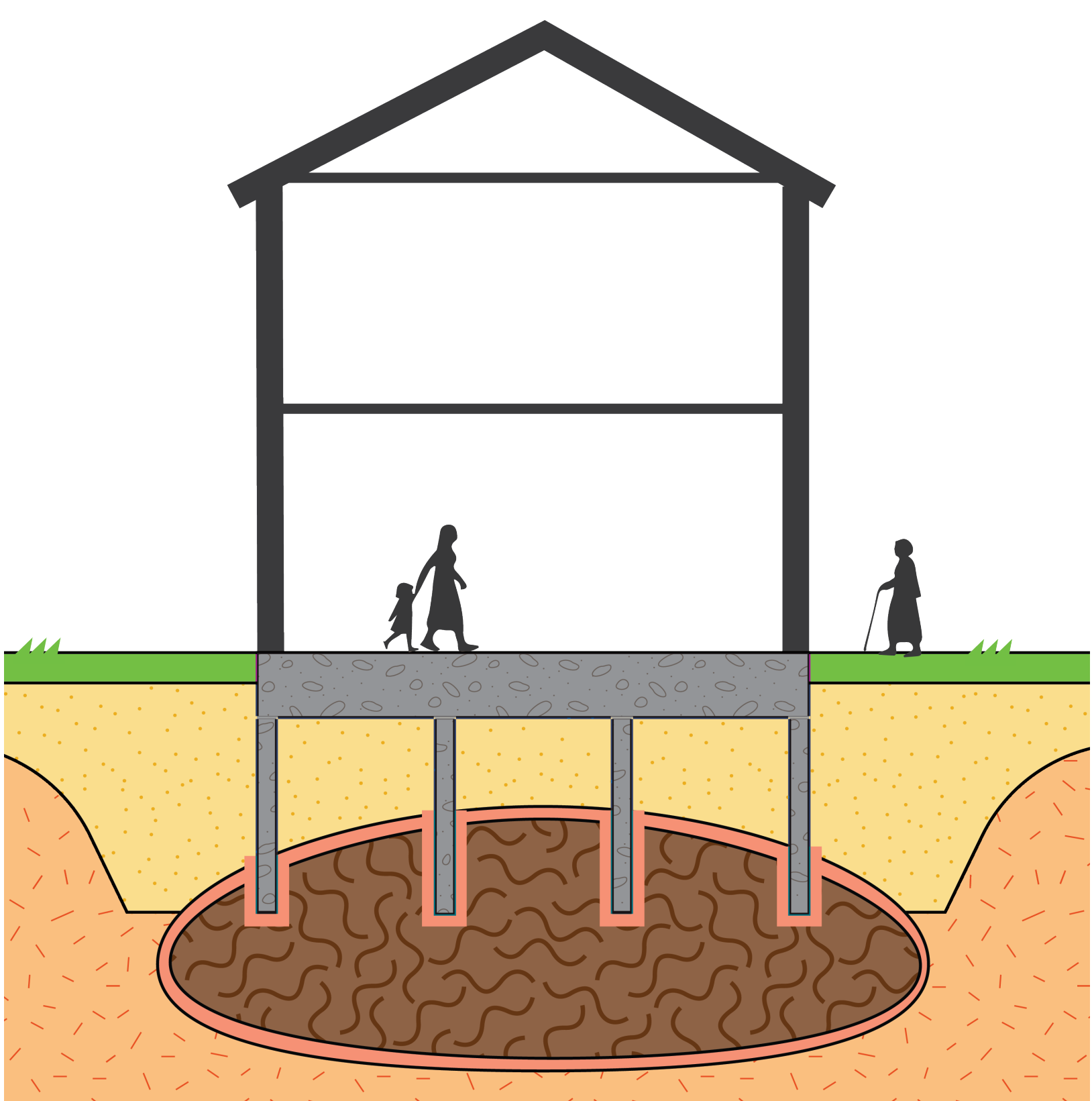
- Low impact improvements that have minimal disturbance of the cover
- Least affected by settlement
- Irrigated plants and fields are not allowed
- Least level of regulatory requirements

Typical Park Improvements



- Medium cover disturbance
- Potential site settlement, which may be mitigated by larger slab foundations
- Irrigated landscape can only be proposed if there is an impermeable barrier between the irrigated planter and the soil cover layer.
- More regulatory requirements

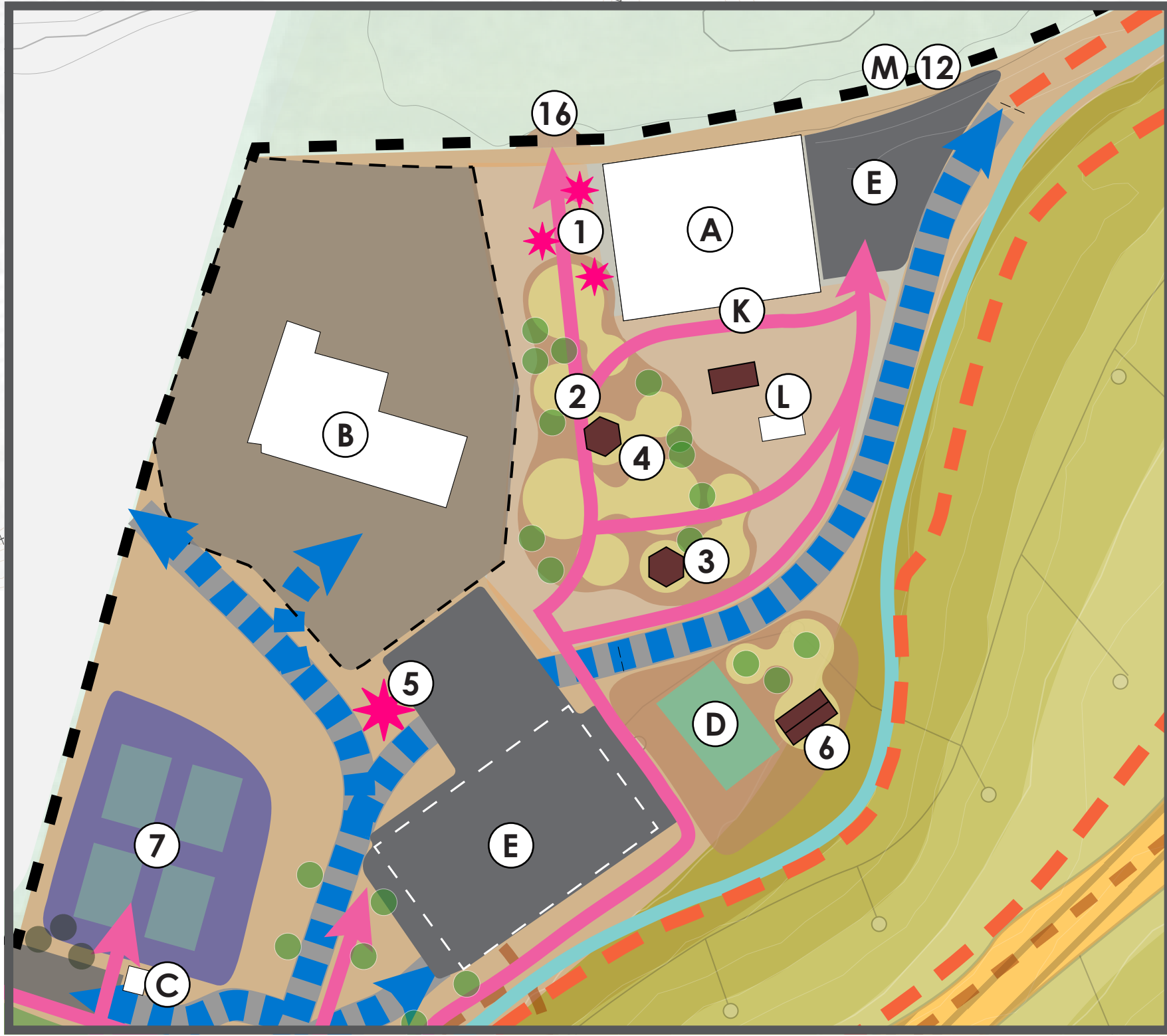
Major Structures



- Picnic shelters, paved courts, and buildings require a thicker foundation to mitigate cracking and shifting from differential settlement
- Most regulatory requirements

SUTTER'S LANDING PARK SITE PLAN

December 12, 2024



Existing Conditions

- (A) 28th & B St. Skate Park
- (B) Corporation Yard
- (C) Restroom Building
- (D) Bocce Ball Courts
- (E) Parking Lot
- (F) Shade Shelter
- (G) Dog Park
- (H) Flare Station
- (I) Detention Basin
- (J) Transmission Towers
- (K) Mural
- (L) Concession Building
- (M) ADA Access Trail

Proposed Amenities

- (1) Garden/ Art Walk
- (2) Nature Play
- (3) Outdoor Fitness
- (4) Community Gathering Space
- (5) Art/ Signage
- (6) Group Picnic Area
- (7) Multi-Use Courts
- (8) All Weather Multi-Use Fields
- (9) Parking Lot
- (10) Community Event Space
- (11) Vista Point with Group Viewing Area
- (12) Parkway Connection Point
- (13) Bike Pump Track
- (14) Resting Point/ Seating
- (15) Small Play Area
- (16) River Lookout Point
- (17) Native Grassland
- (18) Landfill Operations (no public access)

Circulation

- Pedestrian - Paved
- Pedestrian - Unpaved
- Vehicular - Paved
- Two Rivers Bike Trail
- Maintenance/Multi-Use Gravel Road



SUTTER'S LANDING PARK DRAFT PLAN



Connect To The Landfill
Activities And Gathering Space