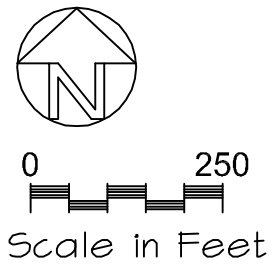


LEGEND
 G - MAJOR GATEWAY, SEE SHEET 7
 g - MINOR GATEWAY, SEE SHEET 8

- TRAILSIDE INTERPRETIVE SIGNS**
 (SEE SHEETS 9 AND 12)
1. TOPIC: ARCADE CREEK WATERSHED
 LOCATION: OVERLOOKING CREEK, CONSTRUCTED SIMILAR TO BIRDWATCHING OVERLOOK, (SEE SHEET 3)
 2. TOPIC: LOCAL HISTORY
 LOCATION: AT SITE OF VAN MAREN HOMESTEAD. COORDINATE WITH EXISTING SIGN IN VAN MAREN PARK. REPLACE TURF WITH ALTERNATIVE (YARROW OR SIMILAR).
 3. TOPIC: RIPARIAN WOODLAND
 LOCATION: OVERLOOKING CREEK CHANNEL AT BEND
 4. TOPIC: ANIMAL NEIGHBORS
 LOCATION: NEAR RESIDENCES
 5. TOPIC: ECOSYSTEMS
 LOCATION: ALONG NORTH ENTRY PATH

SEE FOLLOWING SHEETS FOR MORE INFORMATION ON INTERPRETIVE ELEMENTS IN DETAIL AREAS.

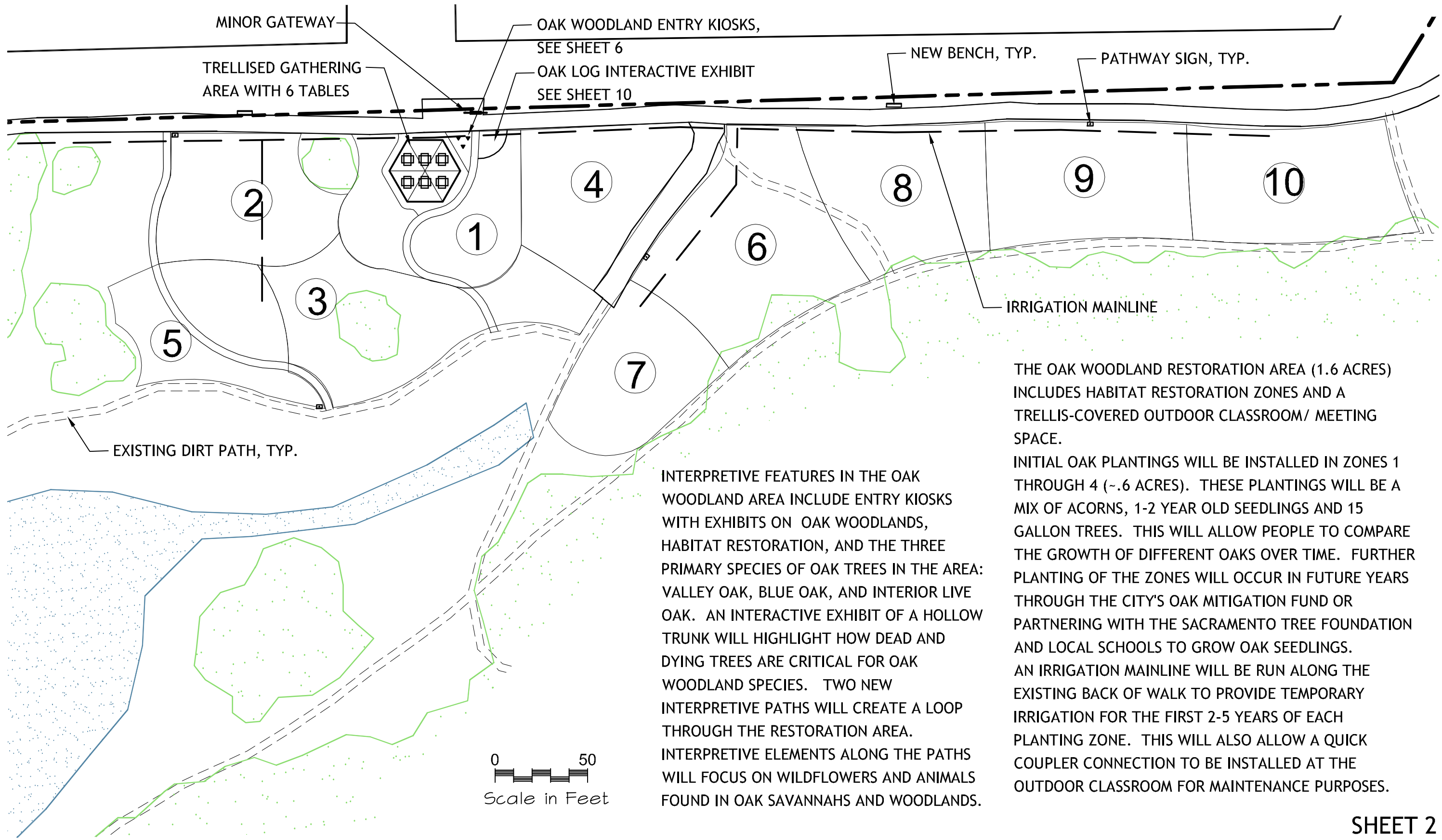


BIRD WATCHING EXHIBITS ALONG RAILING
 REPLACE RAILING WITH HIGH-TENSILE WIRE FENCE BETWEEN POSTS IN SOME SECTIONS TO ALLOW INCREASED VISIBILITY.



EXAMPLE OF ONE TYPE OF WIRE FENCE RAILING

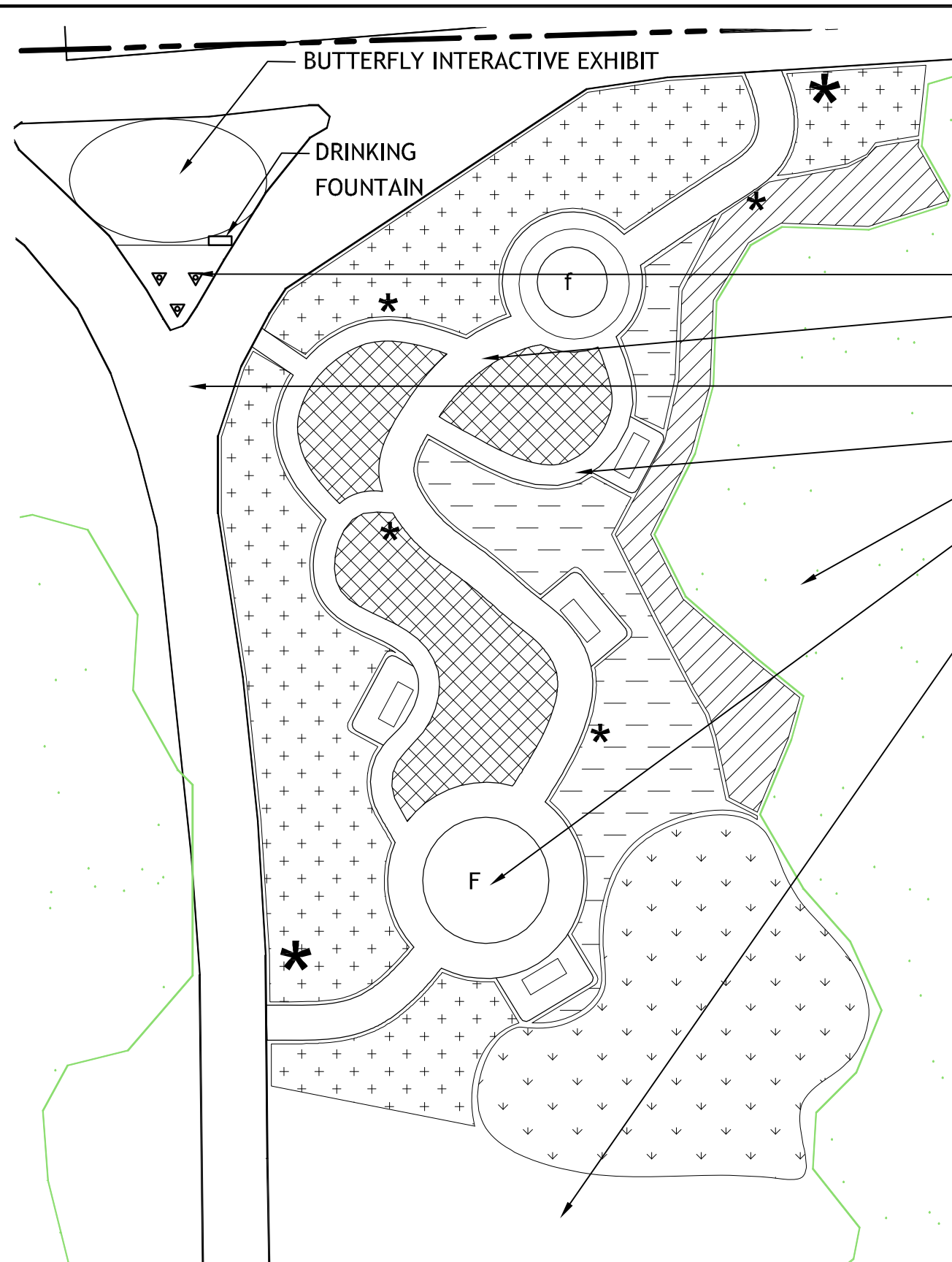
SHEET 1



INTERPRETIVE FEATURES IN THE OAK WOODLAND AREA INCLUDE ENTRY KIOSKS WITH EXHIBITS ON OAK WOODLANDS, HABITAT RESTORATION, AND THE THREE PRIMARY SPECIES OF OAK TREES IN THE AREA: VALLEY OAK, BLUE OAK, AND INTERIOR LIVE OAK. AN INTERACTIVE EXHIBIT OF A HOLLOW TRUNK WILL HIGHLIGHT HOW DEAD AND DYING TREES ARE CRITICAL FOR OAK WOODLAND SPECIES. TWO NEW INTERPRETIVE PATHS WILL CREATE A LOOP THROUGH THE RESTORATION AREA. INTERPRETIVE ELEMENTS ALONG THE PATHS WILL FOCUS ON WILDFLOWERS AND ANIMALS FOUND IN OAK SAVANNAHS AND WOODLANDS.

THE OAK WOODLAND RESTORATION AREA (1.6 ACRES) INCLUDES HABITAT RESTORATION ZONES AND A TRELLIS-COVERED OUTDOOR CLASSROOM/ MEETING SPACE. INITIAL OAK PLANTINGS WILL BE INSTALLED IN ZONES 1 THROUGH 4 (~.6 ACRES). THESE PLANTINGS WILL BE A MIX OF ACORNS, 1-2 YEAR OLD SEEDLINGS AND 15 GALLON TREES. THIS WILL ALLOW PEOPLE TO COMPARE THE GROWTH OF DIFFERENT OAKS OVER TIME. FURTHER PLANTING OF THE ZONES WILL OCCUR IN FUTURE YEARS THROUGH THE CITY'S OAK MITIGATION FUND OR PARTNERING WITH THE SACRAMENTO TREE FOUNDATION AND LOCAL SCHOOLS TO GROW OAK SEEDLINGS. AN IRRIGATION MAINLINE WILL BE RUN ALONG THE EXISTING BACK OF WALK TO PROVIDE TEMPORARY IRRIGATION FOR THE FIRST 2-5 YEARS OF EACH PLANTING ZONE. THIS WILL ALSO ALLOW A QUICK COUPLER CONNECTION TO BE INSTALLED AT THE OUTDOOR CLASSROOM FOR MAINTENANCE PURPOSES.

SHEET 2



- LEGEND**
- F - MAJOR FEATURE
 - f - MINOR FEATURE
 - * - MAJOR TRAIL SIGN
 - * - MINOR PATH SIGN (18" x 12")
 - - ACCESSIBLE BENCH ALCOVE
 - △ - TRIANGLE KIOSKS
 - 5 FT WIDE STABILIZED DG PATHS EDGED WITH COBBLE
 - EXISTING PAVED PATH
 - 3 FT WIDE STABILIZED DG PATHS
 - EXISTING OAK WOODLAND
 - MAJOR AND MINOR PEDESTRIAN ROUNDABOUTS WITH ART FEATURE
 - POTENTIAL FUTURE GARDEN EXPANSION AREA
 - - TURF ALTERNATIVES
 - ▨ - OAK WOODLAND PLANTS
 - ▩ - HUMMINGBIRD/BUTTERFLY VIEWING
 - ▽ - NATIVE BULBS AND ANNUALS
 - ⊕ - NATIVE ORNAMENTAL USES

- INTERPRETIVE ELEMENTS**
1. MAJOR TRAIL SIGN TOPICS
 - WHY USE NATIVE PLANTS IN YOUR ORNAMENTAL GARDEN
 - NATIVE PLANTS FOR BEES AND BUTTERFLIES
 - DROUGHT TOLERANT LANDSCAPING
 2. MINOR PATH SIGN TOPICS
 - HIGHLIGHT GARDEN AREAS (ANNUAL MEADOW, BUTTERFLY, BEE, PLANTING UNDER OAKS, TURF ALTERNATIVES, ETC.)
 - IDENTIFY MAJOR PLANTS
 3. MAJOR AND MINOR FEATURES
 - FOCAL POINT PLANTING FEATURING SMALL TREE/SHRUBS
 - LOCATION FOR FUTURE INTERPRETIVE ELEMENT
 - LOCATION FOR FUTURE GARDEN THEME PUBLIC ART PIECE
 4. PLANT PALETTE OBJECTIVES
 - DROUGHT TOLERANT
 - INCLUDE PLANTS NATIVE TO NORTHERN CALIFORNIA
 - BUTTERFLY/BEE NECTAR/POLLEN
 - NON-INVASIVE
 - LOW MAINTENANCE

SEE SHEETS 4 & 5 FOR CONCEPTUAL PLANT LIST AND IMAGES.



SHEET 3



CEANOTHUS SP.



ANNUAL
WILDFLOWERS



ERIOGONUM SP.



GRINDELIA SP.



LUPINUS SP.



MONARDELLA SP.



ASCLEPIAS SP.



ACHILLEA SP.



AGASTACHE SP.



PENSTEMON SP.



ROSA SP.



CERCIS OCCIDENTALIS.



MIMULUS SP.



ZAUSCHNERIA SP.



SALVIA SP.



Name	Common Name	Height Ft.	Spread Ft.	Bloom Season	Color	Native	Butterflies	Bees	Hummingbirds
PERENNIALS									
Achillea ageratum 'Moonwalker'	Moonwalker Yarrow	2.5	2.5	June - September	Yellow	N	Y	Y	
Achillea millefolium 'Cassis'	Cassis Yarrow	3	2	June - September	Red	Y	Y	Y	
Achillea millefolium 'Sonoma Coast'	White Yarrow	1	2	June - September	White	Y	Y	Y	
Achillea millefolium var. rubra 'Rosy Red'	Rosy Red Yarrow	2	1.5	June - September	Pink	Y	Y	Y	
Agastache aurantiaca 'Apricot Sprite'	Apricot Sprite Hyssop	2.5	1.5	June - September	Peach	N	Y	Y	Y
Agastache aurantiaca 'Coronado'	Hummingbird Mint	2.5	1.5	June - September	Orange	N	Y	Y	Y
Agastache 'Black Adder'	Black Adder Hyssop	3	2	August - Frost	Purple	N	Y	Y	Y
Agastache mexicana 'Sangria'	Mexican Giant Hyssop	2	1	June - September	Pink	N	Y	Y	Y
Agastache pallida x rugosa 'Globetrotter'	Globetrotter Hyssop	2.5	1.5	June - September	Pink	N	Y	Y	Y
Agastache 'Purple Pygmy'	Hummingbird Plant	1.25	1.25	May - September	Magenta	N	Y	Y	Y
Anchusa azurea 'Alkanet'	Alkanet Anchusa	4	3	June - September	Blue	N	Y	Y	Y
Argemone munita	Prickly Poppy	2	2	April - July	White	Y	Y	Y	Y
Asclepias fascicularis	Narrow Leaved Milkweed	3	3	June - September	Pink	Y	Y	Y	Y
Asclepias cordifolia	Heart-leaf Milkweed	2	3	May - September	Violet	Y	Y	Y	Y
Asclepias speciosa 'Davis'	Davis Milkweed	3	2	May - September	Pink	Y	Y	Y	Y
Asclepias syriaca 'Virginia Silk'	Virginia Silk Milkweed	3	3	June - August	Pink	N	Y	Y	Y
Camissonia bistorta	Sunflakes	0.75	3	March - September	Yellow	Y			
Camissonia cheiranthifolia	Beach Primrose	0.5	3	March - September	Yellow	Y			
Delphinium cardinale	Scarlet Larkspur	4	1	May - June	Scarlet	Y	Y	Y	Y
Dicentra formosa	Pacific Bleeding Heart	1	1	May - July	Pink	Y			
Erigeron glaucus 'Wayne Roderick'	Seaside Daisy	1	3	March - November	Lavendar	Y	Y	Y	
Eriogonum arborescens	Santa Cruz Island Buckwheat	2	3	March - June	White	Y	Y	Y	
Eriogonum latifolium	"Seaside Buckwheat"	1	2	May - October	White	Y	Y	Y	
Eriogonum nudum 'Ella Nelson's Yellow'	Naked Buckwheat	3	2	May - October	Yellow	Y	Y	Y	
Eriogonum ovalifolium	Cushion Buckwheat	0.25	1	April - June	Pink	Y	Y	Y	
Eriogonum umbellatum	Sulphur Flower Buckwheat	1	2	May - September	Yellow	Y	Y	Y	
Iris douglasiana	Pacific Coast Iris (Multiple hybrids)	1	2	May - June	Various	Y			
Lessingia filaginifolia 'Silver Carpet'	Silver Carpet Aster	<1	4	April - June	Pink	Y	Y		
Lupinus albus var. collinus	Dwarf Silver Bush Lupine	1	1	April - June	Purple	Y	Y		
Monardella villosa	Coyote Mint	2	2	July - August	Purple	Y	Y		
Penstemon centranthifolius	Scarlet Bugler Penstemon	2	2	April - June	Scarlet	Y			Y
Penstemon heterophyllus	Foothills Penstemon	1	1	June - September	Blue	Y	Y		Y
Penstemon palmeri	Scented Penstemon	2	2	June - September	Pink	Y		Y	Y
Penstemon venustus	Venustus Penstemon	2	1.5	June - July	Blue	Y	Y		Y
Ranunculus californicus	Buttercups	2	2	April - May	Yellow	Y			
Salvia sonomensis	Creeping Sage	1	6	May - June	Purple	Y		Y	
Sedum spathulifolium	Pacific Stonecrop	0.25	2	May - July	Yellow	Y			
Zauschneria californica	California Fuschia	2	2	July - October	Scarlet	Y	Y	Y	Y
Zauschneria latifolia johnstonii	Bush California Fuschia	2	2	July - October	Scarlet	Y	Y	Y	Y
LOW SHRUBS									
Arctostaphylos densiflora 'Howard McMinn'	Howard McMinn Manzanita	8	8	February - May	White	Y		Y	Y
Artemisia californica	California Sagebrush	4	4	March - May	White	Y		Y	
Ceanothus 'Joyce Coulter'	Joyce Coulter Ceanothus	2	8	Feb - Apr	Blue	Y	Y	Y	Y
Encelia farinosa 'Incenio'	Brittlebush	2	3	May - August	Yellow	Y	Y	Y	
Eriogonum fasciculatum foliolosum	Buckwheat	3	4	May - October	White	Y	Y	Y	
Heteromeles arbutifolia	Toyon	8	6	June - August	White	Y	Y	Y	
Keckiella antirrhinoides	Yellow Bush Snapdragon	4	3	March - May	Yellow	Y	Y	Y	Y
Keckiella cordifolia	Heartleaf Penstemon	4	2	May - July	Scarlet	Y			Y
Lupinus albus	Silver Bush Lupine	3	3	April - August	Purple	Y	Y		
Lupinus arboreus 'Blue'	Blue Tree Lupine	4	6	April - August	Purple	Y	Y	Y	Y
Lupinus arboreus 'Yellow'	Yellow Tree Lupine	4	4	April - August	Yellow	Y	Y	Y	Y
Mimulus aurantiacus	Sticky Monkeyflower	4	4	April - June	Orange	Y	Y		Y
Philadelphus lewisii	California Mock-orange	8	4	April - May	White	Y	Y	Y	
Ribes sanguineum	Wild Currant	5	3	February - April	Pink	Y		Y	Y
Rosa californica	Wild California Rose	4	6	May - October	Pink	Y	Y	Y	
Rosa woodsii	Woods Rose	4	4	May - October	Pink	Y		Y	
Salvia apiana	White Sage	2	5	Mar - June	White	Y		Y	
Salvia leucophylla	Purple Sage	4	4	May - July	Purple	Y	Y	Y	Y
TALL SHRUBS									
Ceanothus 'Ray Hartman'	Ray Hartman Ceanothus	15	15	Feb - Apr	Blue	Y	Y	Y	Y
Cercis occidentalis	Western Redbud	12	8	Feb - Apr	Magenta	Y		Y	Y
VINES									
Clematis lasiantha	Pipestem Clematis	12	2	March - June	White	Y	Y	Y	

PLANTING AREA CONCEPTS

1. OAK WOODLAND PLANTS
 - PLANT SPECIES THAT NATURALLY OCCUR IN AND HAVE CULTIVATION REQUIREMENTS COMPATIBLE WITH NATIVE OAK WOODLAND
2. HUMMINGBIRD/BUTTERFLY VIEWING
 - CENTRAL GARDEN AREA WITH ACCESSIBLE PATHWAYS AND BENCHES FOR OBSERVING NECTAR FEEDING BUTTERFLIES AND HUMMINGBIRDS
 - NO BACKS ON BENCHES ALLOW VIEWING IN BOTH DIRECTIONS
 - EXTEND BLOOM SEASON WITH WIDE VARIETY OF PLANTS
3. NATIVE BULBS/ANNUALS
 - LOW MAINTENANCE AREA WITH SPRING/EARLY SUMMER SHOW OF NATIVES TO BE MOWED AFTER SEED SET AND DISPERSES
 - NO IRRIGATION
4. NATIVE ORNAMENTAL USES
 - DEMONSTRATION AREA TO SHOW DROUGHT TOLERANT PLANTS IN DIFFERENT ORNAMENTAL GROUPINGS AND USES, SUCH AS BORDER, BACKGROUND, AND ACCENT PLANTINGS
5. TURF ALTERNATIVES
 - LOW WATER USE
 - INFREQUENT MOWING
 - NO FERTILIZER

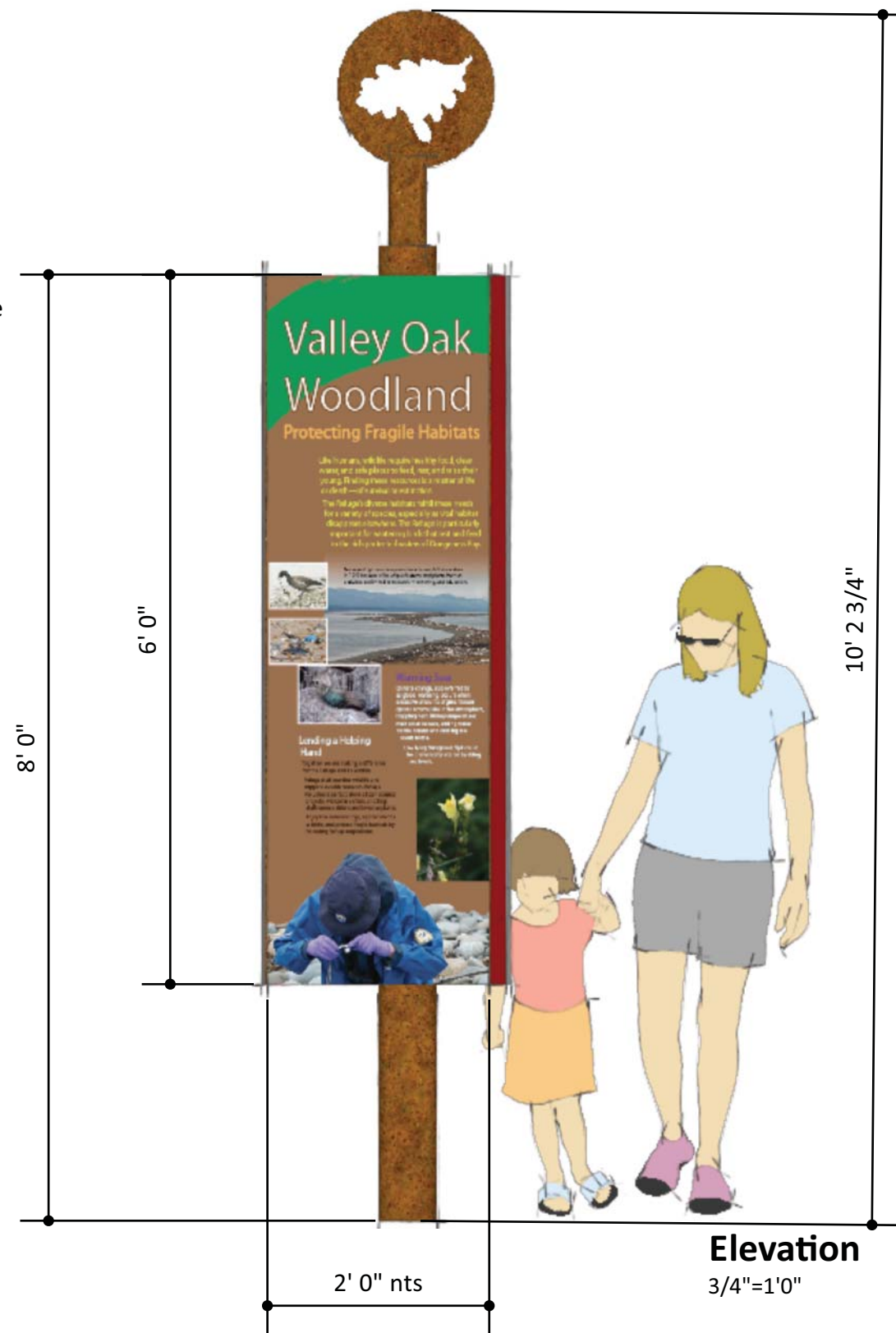


water jet cut core 10 steel

core 10 steel

3 sided kiosk, with exterior grade graphics (tbd)

core 10 steel in concrete footing



These drawings are the property of the designer. Use only by permission.

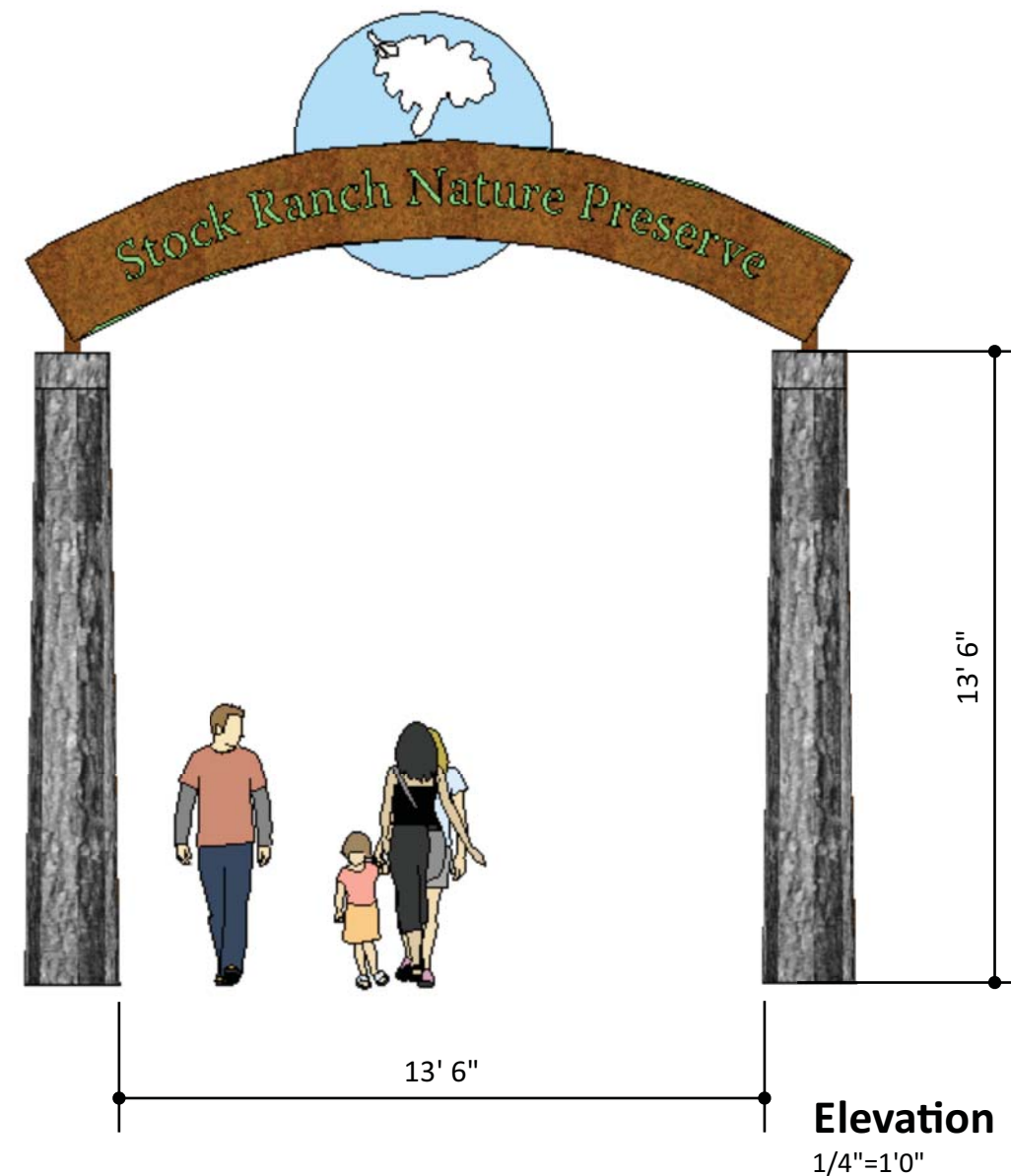


graphic disc with icon cutout

core-10 steel cutouts

core 10 curved header with cut through letters on both sides with exterior grade color between

cast concrete tapered columns with oak bark texture, core 10 steel sub structure in concrete footing



Sketch/ Main Entry Ver 03
Verify Dimensions with Site Visit

These drawings are the property of the designer. Use only by permission.

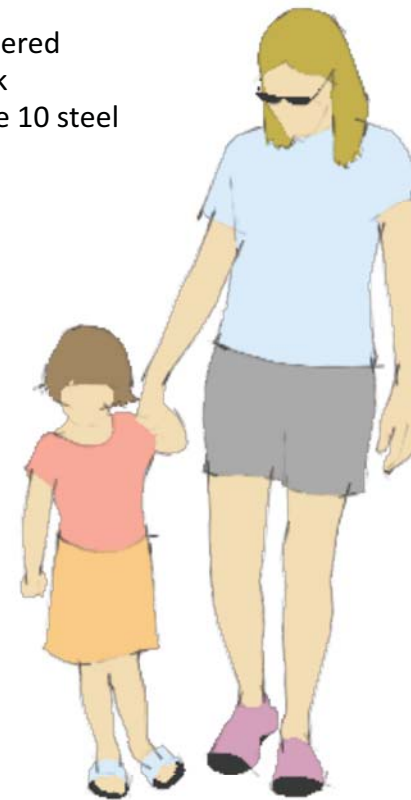


graphic disc with icon cutout

core-10 steel cutouts

core 10 curved header with cut through letters on both sides with exterior grade color between

cast concrete tapered columns with oak bark texture, core 10 steel sub structure in concrete footing



Elevation
3/4"=1'0"

7' 4 3/8"

8' 1 3/4"

7' 10 1/2"

Sketch/ Secondary Entry
Ver 03

These drawings are the property of the designer. Use only by permission.



Sketch/ Graphic Rail ver 03

These drawings are the property of the designer. Use only by permission.

possible "crack" in side of the log
for visitors to look in the bark

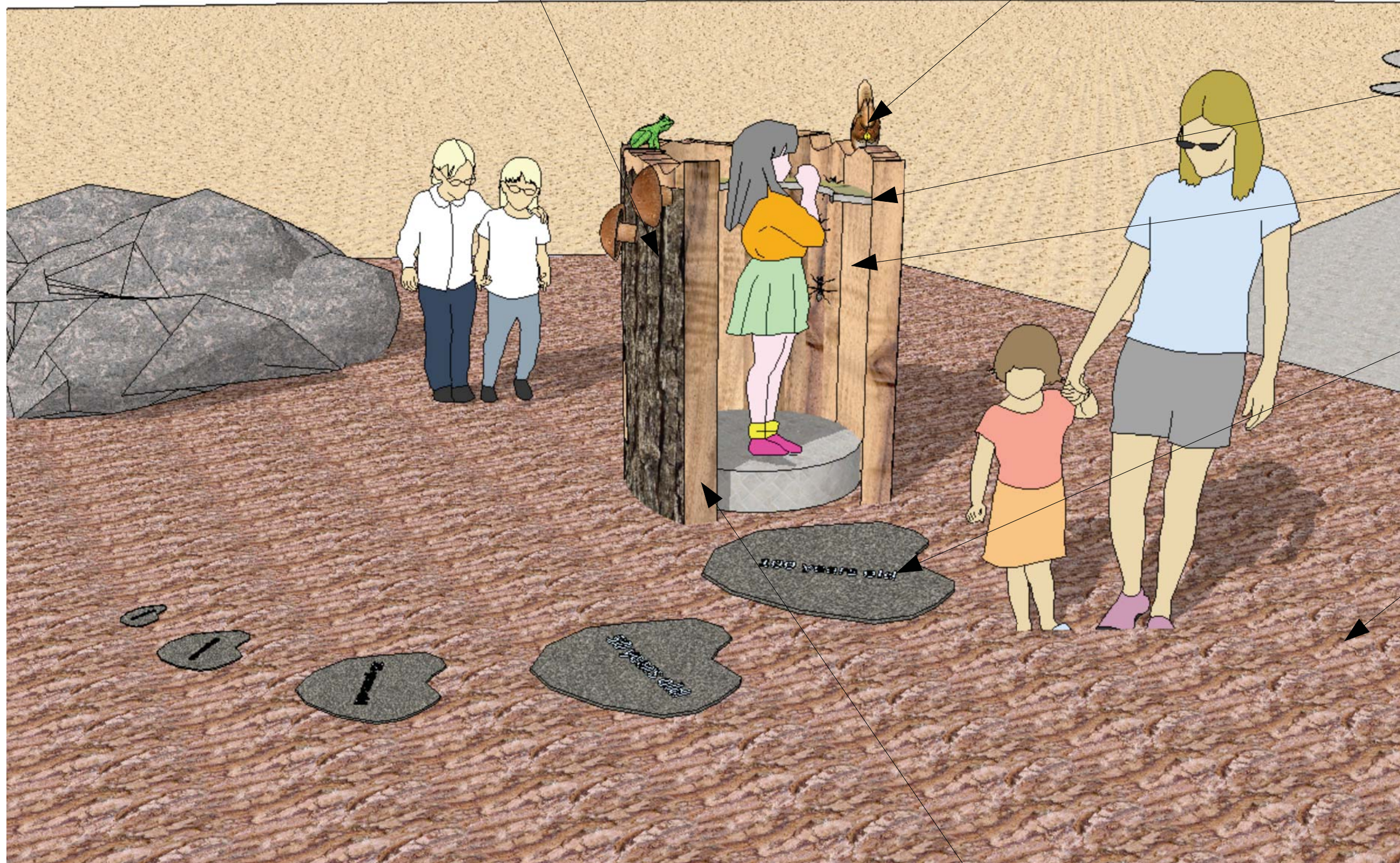
touchable cast mushrooms, squirrels, frogs, ants etc (permanent mount)

graphic rail

standing oak log with messaging of
what lives in a decaying log

concrete or other hard material
silhouette with sandblasted messaging
of how old an oak tree would be at
this size

soft playground material



interactive to be fabricate with exterior grade
fiberglass and resin (or equal)

Sketch/ Standing Log Interactive
ver 03

These drawings are the property of the designer. Use only by permission.

exterior grade graphics with information about wetlands in the preserve

touchable cat tail sculpture that children can walk through and look at little pads on the 'water'



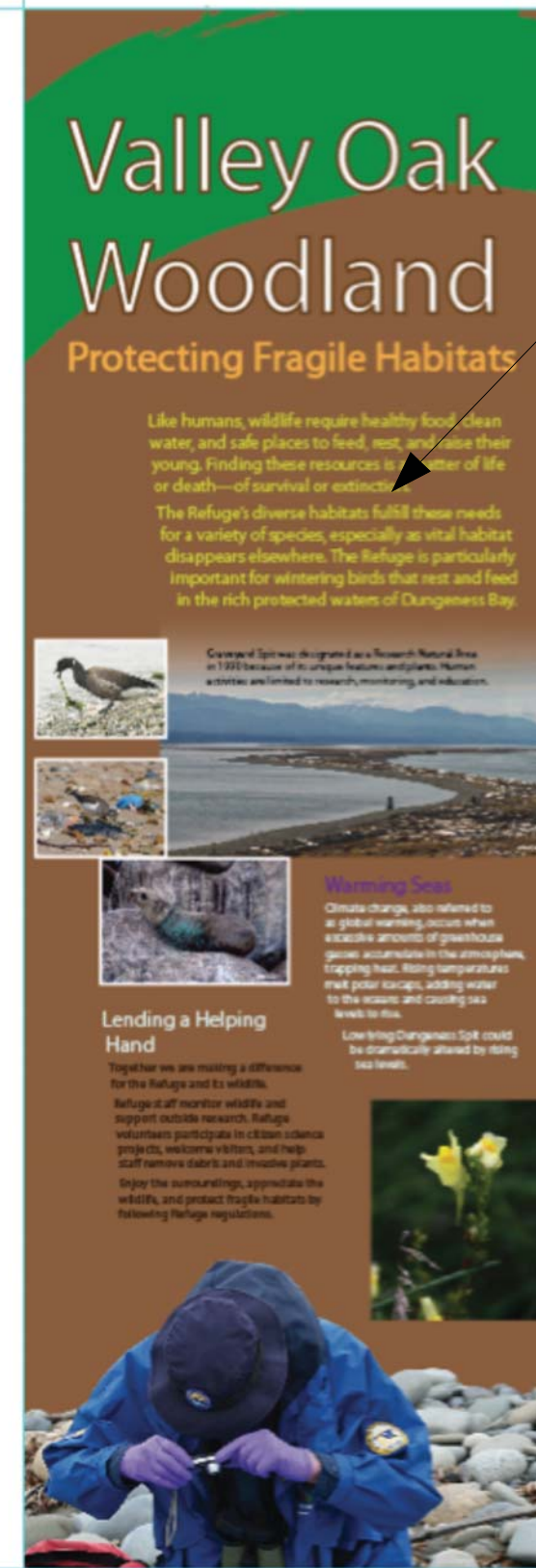
soft play ground material

poured in place soft playground material with 'lily pad' graphics

lily pad graphics in exterior grade playground material

Sketch/ Wetlands Interactive
ver 03

These drawings are the property of the designer. Use only by permission.




graphic panel 2'0" x 6'0"

option c

Sketch/ Graphics

These drawings are the property of the designer. Use only by permission.




 7556 NE Stanton Street
 Portland OR 97213
 503 256 9986
 alan@alchemyofdesign.com

date:	March 2012, April12,May12
designer:	alan

Stock Ranch Nature Preserve



Sheet 12



Wetland Sculpture/ Option



Butterfly/Wetland Interactive/ Option



option to add graphics to the wings or seat

Butterfly Seat Option

<http://www.cerzanstudio.com/cricketforge/butterflybench.html>

These drawings are the property of the designer. Use only by permission.