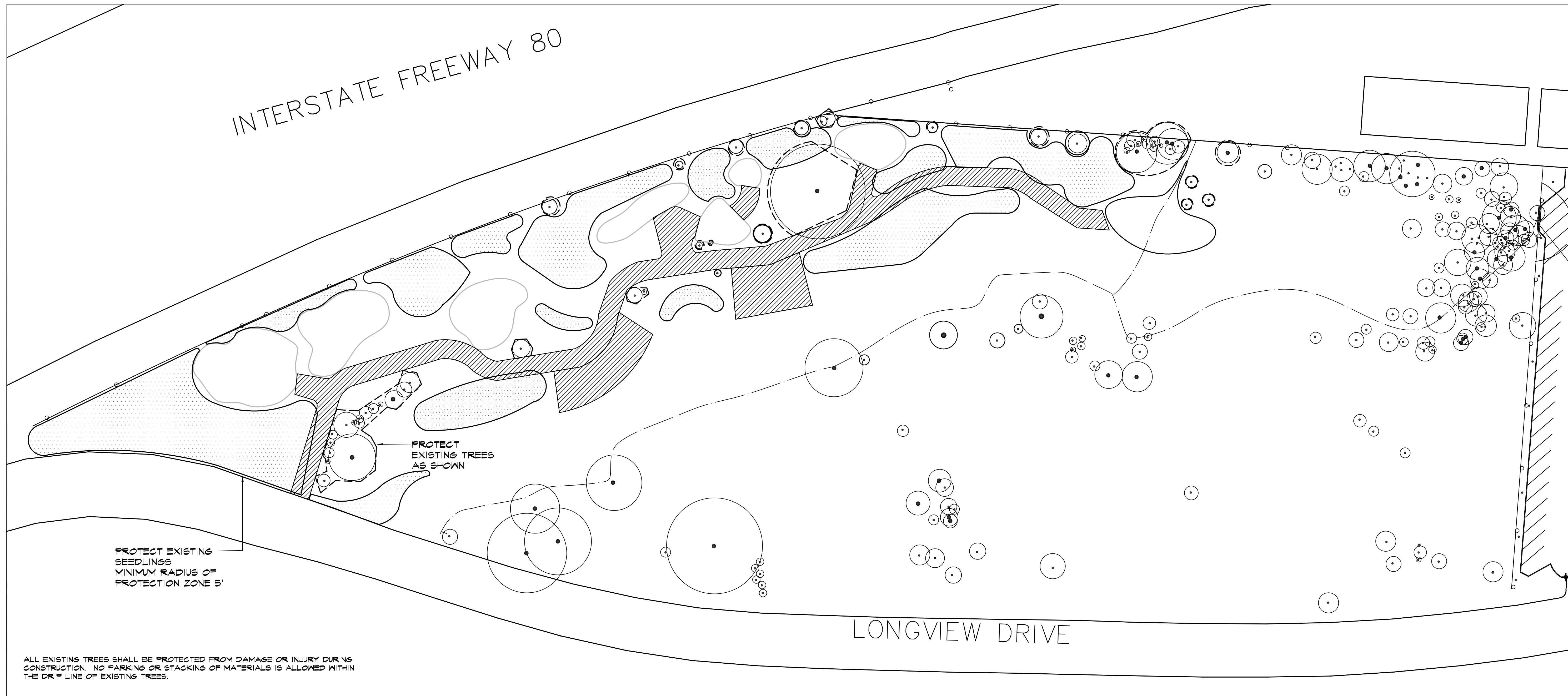


INTERSTATE FREEWAY 80



PROTECT EXISTING TREES AS SHOWN

PROTECT EXISTING SEEDLINGS
MINIMUM RADIUS OF PROTECTION ZONE 5'

ALL EXISTING TREES SHALL BE PROTECTED FROM DAMAGE OR INJURY DURING CONSTRUCTION. NO PARKING OR STACKING OF MATERIALS IS ALLOWED WITHIN THE DRIP LINE OF EXISTING TREES.

LONGVIEW DRIVE

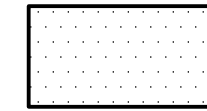
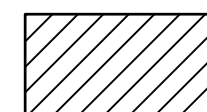
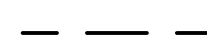
STREAMBED ALTERATION AGREEMENT NOTES

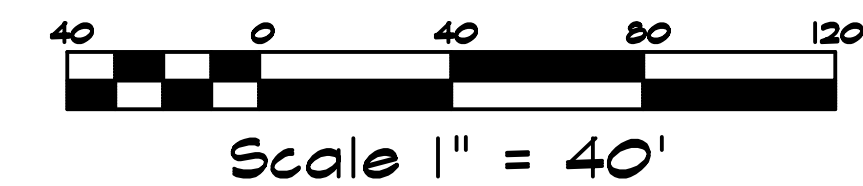
- A. A COPY OF THE STREAMBED ALTERATION AGREEMENT SHALL BE PROVIDED TO, AND SIGNED BY, THE CONTRACTOR PRIOR TO THE START OF CONSTRUCTION. A COPY OF THE AGREEMENT SHALL BE AVAILABLE ON SITE AT ALL TIMES.
- B. CONSTRUCTION ACTIVITIES SHALL BE LIMITED TO PERIODS OF LOW STREAM FLOW BETWEEN APRIL 1, 2003 AND OCTOBER 31, 2003. CONSTRUCTION ACTIVITIES SHALL CEASE AND ALL REASONABLE EROSION CONTROL MEASURES SHALL BE IMPLEMENTED PRIOR TO ALL STORM EVENTS.
- C. IF CONSTRUCTION, GRADING, OR OTHER PROJECT RELATED IMPROVEMENTS ARE SCHEDULED BETWEEN FEBRUARY 1, 2003 AND AUGUST 31, 2003 A FOCUSED SURVEY FOR ACTIVE RAPTOR NESTS WILL BE CONDUCTED BY A QUALIFIED BIOLOGIST WITHIN 15 DAYS PRIOR TO THE BEGINNING OF PROJECT RELATED ACTIVITIES. CONTACT FOOTHILL ASSOCIATES FOR BIOLOGICAL SURVEY.
- D. THE CONTRACTOR WILL NOTIFY FOOTHILL ASSOCIATES, WHO WILL NOTIFY THE DEPARTMENT OF FISH AND GAME, WITHIN TWO WORKING DAYS OF BEGINNING WORK IN THE STREAM ZONE.
- E. THE CONTRACTOR OR A DESIGNATED CREW SUPERVISOR SHALL BE ON SITE THE ENTIRE TIME A WORK CREW IS WORKING NEAR THE STREAM ZONE.
- F. THE CONTRACTOR SHALL NOTIFY FOOTHILL ASSOCIATES, WHO WILL NOTIFY THE DEPARTMENT OF FISH AND GAME, WITHIN TWO WORKING DAYS OF THE COMPLETION OF WORK WITHIN THE STREAM ZONE.
- G. OIL OR OTHER PETROLEUM PRODUCTS, OR ANY OTHER SUBSTANCES THAT COULD BE HAZARDOUS TO AQUATIC LIFE, RESULTING FROM PROJECT RELATED ACTIVITIES SHALL BE PREVENTED FROM CONTAMINATING THE SOIL AND/OR ENTERING THE WATERS OF THE STREAM. THE DEPARTMENT OF FISH AND GAME SHALL BE NOTIFIED IMMEDIATELY OF ANY SPILLS AND SHALL BE CONSULTED REGARDING CLEAN-UP PROCEDURES.
- H. DURING CONSTRUCTION, THE CONTRACTOR SHALL NOT DUMP ANY LITTER OR CONSTRUCTION DEBRIS WITHIN THE STREAM ZONE. ALL CONSTRUCTION DEBRIS AND ASSOCIATED MATERIALS, SUCH AS TEMPORARY CONSTRUCTION FENCES, BARRIERS, AND/OR FLAGGING, SHALL BE REMOVED UPON THE COMPLETION OF THE PROJECT.
- I. ALL DISTURBED AREAS LEFT BARREN OF VEGETATION AS A RESULT OF CONSTRUCTION ACTIVITIES WILL BE RESEEDED ACCORDING TO THE SPECIFICATIONS AND PROJECT PLANS. REVEGETATION IS NOT CONFINED TO THE TIME PERIOD OF APRIL 1, 2003 TO OCTOBER 1, 2003.

PLANTING NOTES

- 1. SPECIFICATIONS: SEE TECHNICAL SPECIFICATIONS AND GENERAL NOTES FOR ADDITIONAL INFORMATION INCLUDING UTILITIES VERIFICATION PROTECTION, AND RESTORATION INFORMATION AND REQUIREMENTS.
- 2. EXISTING PLANT MATERIAL: PROTECT ALL EXISTING TREES AND PLANT MATERIAL TO REMAIN. CONTRACTOR TO REPAIR AT NO ADDITIONAL COST ANY DAMAGES INCURRED AS A RESULT OF THIS CONTRACT TO THE OWNER'S SATISFACTION.
- 3. PLANTING: ALL TREE AND WETLAND PLANTING SHALL BE DONE BY VOLUNTEERS. CONTRACTOR SHALL BE RESPONSIBLE FOR HYDROSEEDING DISTURBED AREAS. MAINTENANCE WILL BE PROVIDED BY VOLUNTEERS AND THE CITY OF SACRAMENTO PARK MAINTENANCE STAFF. THESE PLANS ARE PROVIDED TO THE CONTRACTOR FOR INFORMATIONAL PURPOSES ONLY.
- 4. DISTURBED AREAS: ALL DISTURBED AREAS OUTSIDE OF THE VERNAL POOLS AND DETENTION WETLAND SHALL BE HYDROSEEDED WITH THE FOLLOWING MIX: GOLDEN STATE NATIVE GRASS EROSION MIX, AVAILABLE FROM LARNER SEEDS (415) 868-9407.
- 5. DETENTION WETLAND: THE CONTRACTOR WILL HYDROSEED THE DETENTION WETLAND WITH THE FOLLOWING MIX: BASIC RIPARIAN MIX, AVAILABLE FROM S&S SEEDS, (805) 684-2798.
- 6. TIMING: ALL PLANTINGS SHALL BE MADE IN THE LATE FALL OR EARLY WINTER TO PERMIT PLANT ESTABLISHMENT IN THE COOL MONTHS AND MAXIMIZE SURVIVAL OF THE PLANTINGS.

PLANTING AND TREE PROTECTION LEGEND

-  SEEDLING PLANTING AREA
-  HAUL ROUTE AND SPOIL ZONES
-  TREE PROTECTION FENCING



CITY OF SACRAMENTO
PARKS AND RECREATION DEPARTMENT
LANDSCAPE ARCHITECTURE SECTION
1028 J STREET, ROOM 200, SACRAMENTO, CA 95814

LONGVIEW OAKS
VERNAL POOL NATURE PRESERVE-PHASE I
PLANTING AND TREE PROTECTION

LANDSCAPE ARCHITECT:
KATE KIRSH
LIC. NO. 4362
DESIGNED BY:
ETA
DRAWN BY:
ETA, MMB
CAD DWG:
longview_PHASEI.dwg
DATE 4/16/2003
SCALE AS SHOWN
P. N. :
REVISIONS

SHEET NO.
2
OF 6

LONGVIEW OAKS PRESERVE