



Roll Call Training Bulletin

Produced by: Lt Sameer Sood, Office of Specialized Services
Prepared by: Officer Mark Kimble, PSU

Katherine Lester, Chief of Police
Volume 25-4

988 Suicide and Crisis Lifeline

3/12/2025

The 988 Suicide and Crisis Lifeline is a national network of local crisis centers that provides free and confidential emotional support to individuals in crisis or emotional distress 24 hours a day, seven days a week. Reasons to call include: substance use disorder, economic worries, relationships, cultural or identity issues, illness, intimate partner violence, depression, mental or physical illness, and loneliness.

WellSpace Health Sacramento operates the region's 988 Suicide and Crisis Lifeline. The hotline serves Northern California, including Sacramento and Placer Counties. WellSpace Health Sacramento can transfer callers needing a mental health crisis response to the Sacramento County Community Wellness Response Team (CWRT) or to Crisis Receiving for Behavioral Health (CRBH).

The CWRT consists of a mental health counselor and a peer with lived experience. The team can respond to individuals experiencing a mental health crisis through one-on-one assistance, de-escalation, crisis interventions, assessment of needs, and the creation of safety plans.

Sacramento Police Department (SPD) members can call CWRT directly at 916-999-4673 to provide a referral for an individual who requests additional support. Keep in mind the CWRT will only provide SPD Officers with limited information on the referral results. When referring CWRT to community members, please refer them to call 988 to ensure timely, appropriate services are provided.

CRBH (previously known as SURE), provides community members with a short-term (4 to 24 hours) opportunity to voluntarily recuperate from the effects of a mental health or substance use crisis while being engaged with wraparound supportive services and facilitating continuity of care. SPD members can call CRBH directly at 916-469-4714, ext 1. For new referrals, SPD must make the initial call. CRBH is located at 631 H Street near the Sacramento County Main Jail.

If you encounter individuals needing mental health support that do not meet 5150 W&I criteria, please consider 988, CWRT, or CRBH as an option to connect community members to mental health services. These programs shall not be used as an alternative to responding to dispatched calls for service.

NOTE: See the attached "BHS Resources for LEA" for additional services.

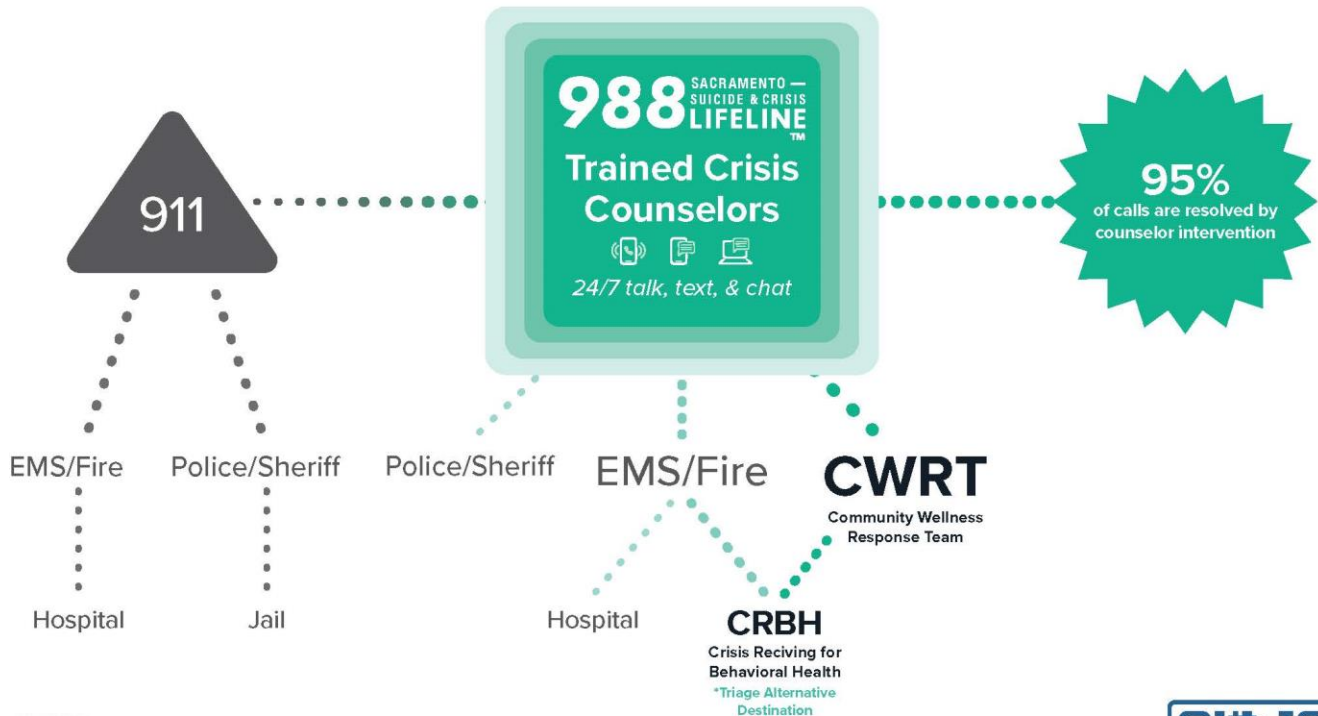


Roll Call Training Bulletin

Produced by: Lt Sameer Sood, Office of Specialized Services
Prepared by: Officer Mark Kimble, PSU

Katherine Lester, Chief of Police
Volume 25-4

Sacramento County Behavioral Health Crisis Continuum



ABOUT

988 Sacramento is a non-profit suicide prevention and mental health crisis center providing confidential support via talk/text/chat 24 hours a day, 7 days a week, across Sacramento County. 988 Sacramento is operated by WellSpace Health, which operates 988 for 32 of California's 58 counties.

988 SACRAMENTO ONE-MONTH SNAPSHOT | DECEMBER 2024

1,292: Sacramento County calls to 988 Sacramento

4: 988 Sacramento Referrals to Emergency First Responders

80: 988 Sacramento Referrals to Community Wellness Response Team

94% of 988 Sacramento crisis calls resolved without further response

